

**JOB No.: TCS01196/22**



**WSD CONTRACT No.: 7/WSD/21 -**

**CONSTRUCTION OF SIU HO WAN WATER TREATMENT  
WORKS EXTENSION AND SIU HO WAN RAW WATER  
BOOSTER PUMPING STATION**

**MONTHLY ENVIRONMENTAL MONITORING AND AUDIT  
REPORT – NOVEMBER 2022**

**PREPARED FOR**

**CHINA ROAD AND BRIDGE CORPORATION**

<b>Date</b>	<b>Reference No.</b>	<b>Prepared By</b> Fai So	<b>Certified By</b> Tam Tak Wing
6 December 2022	TCS01196/22/600/R0041v1		
		Assistant Environmental Consultant	Environmental Team Leader

<b>Version</b>	<b>Date</b>	<b>Remarks</b>
1	6 December 2022	First Submission

Our Ref. 1988/22-0027



**Water Supplies Department**  
New Works Branch  
Consultants Management Division  
Sha Tin Office - 6/F Sha Tin Government  
Offices, 1 Sheung Wo Che Road, Sha  
Tin, New Territories.

27/F, Overseas Trust Bank Building  
160 Gloucester Road  
Wan Chai  
Hong Kong  
T: +852 2815 7028  
F: +852 2815 5399

[www.asecg.com](http://www.asecg.com)

**Attn: Mr. SY Kin Lik (SE/CM 3)**

6 December 2022

**By E-mail**

Dear Sir,

**RE: CONTRACT NO. 7/WSD/21**  
**INDEPENDENT ENVIRONMENTAL CHECKER FOR ENVIRONMENTAL MONITORING AND AUDIT FOR**  
**SIU HO WAN WATER TREATMENT WORKS EXTENSION**  
**MONTHLY ENVIRONMENTAL MONITORING AND AUDIT REPORT – NOVEMBER 2022**

I refer to the Monthly Environmental Monitoring and Audit Report – November 2022 (Report No.: TCS01196/22/600/R0041v1) received on 6 December 2022 by the Environmental Team (ET), Action-United Environmental Services & Consulting (AUES) via email. In accordance with Condition 4.4 of Environmental Permit No. EP-207/2005/A, I hereby verify the captioned report.

Yours faithfully,

For and on behalf of  
**Allied Environmental Consultants Ltd.**

A handwritten signature in black ink, appearing to be 'JN' followed by a stylized flourish.

Joanne NG  
Independent Environmental Checker

JN/tw

c.c. Action-United Environmental Services & Consulting (AUES)  
Binnies Hong Kong Limited

Attn: Mr. Ben Tam  
Attn: Mr. Alex TUNG

(By E-mail)  
(By E-mail)

## EXECUTIVE SUMMARY

- ES.01. Water Supplies Department (WSD) is the Proponent of the Works Contract 7/WSD/21 “Construction of Siu Ho Wan Water Treatment Works Extension and Siu Ho Wan Raw Water Booster Pumping Station” (hereinafter named as the “Works Contract”). Under this Works Contracts, the works mainly comprise of increasing the water treatment capacity of Siu Ho Wan water treatment works (SHW WTW) from 150,000m<sup>3</sup> per day to 300,000m<sup>3</sup> per day within the existing water treatment works compound, by constructing new water treatment facilities and a new laboratory building and modifying the existing associated facilities; and constructing a new raw water booster pumping station at Siu Ho Wan to increase the raw water transfer capacity from Tai Lam Chung Reservoir to SHW WTW.
- ES.02. According to the Environmental Impact Assessment Ordinance (EIAO), the proposed Siu Ho Wan Water Treatment Works Extension is a Designated Project under Schedule 2, which shall be implemented under the Environmental Permit EP-207/2005/A (hereinafter called the “EP”). Besides, the works for Siu Ho Wan Raw Water Booster Pumping Station is a non-designated project which mentioned in Section 1.10 of Environmental Monitoring and Audit (EM&A) Manual.
- ES.03. On 20 March 2022, **China Road and Bridge Corporation** (hereinafter called the “Main Contractor”) awarded the **Works Contracts 7/WSD/21**. According to EM&A Manual, only air quality monitoring is required to be conducted which related to the works area under **Contracts 7/WSD/21** during construction phase of the SHW WTW Extension. Moreover, site inspection and audit is required under the EM&A program to ensure the recommended environmental mitigation measures are implemented properly and effective.
- ES.04. The Main-Contractor appointed Action-United Environmental Services & Consulting (AUES) as the Environmental Team of the Project (hereinafter referred as the “ET”) to implement air quality monitoring as well as associated duties in accordance with the EM&A Manual stipulation.
- ES.05. As advised by the Contractor, the major construction works under Works Contract was commenced on 24 May 2022. This is the 7<sup>th</sup> Monthly EM&A Report presenting monitoring results and inspection finding for the Project for the reporting period from **1 to 30 November 2022**.

## ENVIRONMENTAL MONITORING AND AUDIT ACTIVITIES

- ES.06. Environmental monitoring activities under the EM&A programme for the Contract in the Reporting Month are summarized in the following table.

Issues	Environmental Monitoring Parameters / Inspection	Sessions
Air Quality	24-Hour TSP	5
Inspection / Audit	ET Regular Environmental Site Inspection	5
	Joint site audit with <i>Project Manager's</i> Delegate and IEC	1

## ACTION AND LIMIT LEVELS EXCEEDANCE

- ES.07. In the Reporting Month, no air quality monitoring exceedance was recorded.

## SITE INSPECTION

- ES.08. In the Reporting Month, joint site inspections to evaluate the site environmental performance had been carried out by the representatives of the PMD, ET and the Contractor on **1, 8, 15, 22 and 29 November 2022**. Joint site inspection with PMD, ET, IEC and the Contractor was carried out on **29 November 2022**. No non-compliance was recorded during the site inspections.

## ENVIRONMENTAL COMPLAINT

- ES.09. In the Reporting Month, no environmental complaint was received.

**NOTIFICATION OF SUMMONS AND SUCCESSFUL PROSECUTIONS**

ES.010. In the Reporting Month, no prosecution or notification of summons was received.

**REPORTING CHANGE**

ES.011. There is no reporting change made for this monthly report.

**FUTURE KEY ISSUES**

ES.012. For dry season, special attention should be paid on the potential construction dust impact since most of the construction sites are adjacent to Siu Ho Wan Sewage Treatment Works. The *Contractor* should fully implement the construction dust mitigation measures as appropriately.

ES.013. All effluent discharge shall fulfill the requirement of Discharge Licence under the Water Pollution Control Ordinance.

ES.014. All other mitigation measures recommended in the Implementation Schedule for Environmental Mitigation Measures of the EM&A Manual should be properly implemented and maintained as far as practicable.



## Table of Contents

<b>1</b>	<b>INTRODUCTION</b>	<b>I</b>
1.1	PROJECT BACKGROUND	I
1.2	REPORT STRUCTURE	II
<b>2</b>	<b>PROJECT ORGANISATION AND CONSTRUCTION PROGRESS</b>	<b>III</b>
2.1	PROJECT ORGANISATION	III
2.2	CONSTRUCTION PROGRESS	IV
2.3	SUMMARY OF ENVIRONMENTAL PERMITS AND LICENCES	IV
<b>3</b>	<b>SUMMARY OF IMPACT MONITORING REQUIREMENTS</b>	<b>VI</b>
3.1	GENERAL	VI
3.2	MONITORING PARAMETERS	VI
3.3	MONITORING LOCATIONS	VI
3.4	MONITORING FREQUENCY AND PERIOD	VI
3.5	MONITORING EQUIPMENT	VI
3.6	MONITORING PROCEDURES	VII
3.7	DERIVATION OF ACTION/LIMIT (A/L) LEVELS	VIII
3.8	METEOROLOGICAL INFORMATION	VIII
3.9	DATA MANAGEMENT AND DATA QUALITY ASSURANCE / QUALITY CONTROL (QA/QC)	VIII
<b>4</b>	<b>AIR QUALITY MONITORING</b>	<b>IX</b>
4.1	GENERAL	IX
4.2	AIR MONITORING RESULTS	IX
<b>5</b>	<b>WASTE MANAGEMENT</b>	<b>X</b>
5.1	GENERAL WASTE MANAGEMENT	X
5.2	RECORDS OF WASTE QUANTITIES	X
<b>6</b>	<b>SITE INSPECTIONS</b>	<b>XI</b>
6.1	REQUIREMENTS	XI
6.2	FINDINGS / DEFICIENCIES DURING THE REPORTING MONTH	XI
<b>7</b>	<b>ENVIRONMENTAL COMPLAINTS AND NON-COMPLIANCES</b>	<b>XII</b>
7.1	ENVIRONMENTAL COMPLAINTS, SUMMONS AND PROSECUTIONS	XII
<b>8</b>	<b>IMPLEMENTATION STATUS OF MITIGATION MEASURES</b>	<b>XIII</b>
8.1	GENERAL REQUIREMENTS	XIII
8.2	TENTATIVE CONSTRUCTION ACTIVITIES IN THE COMING MONTH	XIII
8.3	KEY ISSUES FOR THE COMING MONTH	XIII
<b>9</b>	<b>CONCLUSIONS AND RECOMMENDATIONS</b>	<b>1</b>
9.1	CONCLUSIONS	1
9.2	RECOMMENDATIONS	1

## LIST OF TABLES

TABLE 2-1	STATUS OF ENVIRONMENTAL LICENCES AND PERMITS OF THE CONTRACT
TABLE 3-1	SUMMARY OF MONITORING PARAMETERS
TABLE 3-2	DESIGNATED AIR QUALITY MONITORING STATIONS
TABLE 3-3	AIR QUALITY MONITORING EQUIPMENT
TABLE 3-4	ACTION AND LIMIT LEVELS OF AIR QUALITY
TABLE 4-1	SUMMARY OF 24-HOUR TSP MONITORING RESULT - SHWAB
TABLE 5-1	SUMMARY OF QUANTITIES OF INERT C&D MATERIALS FOR THE CONTRACT
TABLE 5-2	SUMMARY OF QUANTITIES OF C&D WASTES FOR THE CONTRACT
TABLE 6-1	SITE OBSERVATIONS FOR THE CONTRACT
TABLE 7-1	STATISTICAL SUMMARY OF ENVIRONMENTAL COMPLAINTS
TABLE 7-2	STATISTICAL SUMMARY OF ENVIRONMENTAL SUMMONS
TABLE 7-3	STATISTICAL SUMMARY OF ENVIRONMENTAL PROSECUTION

**LIST OF APPENDICES**

APPENDIX A	LAYOUT PLAN OF THE PROJECT
APPENDIX B	PROJECT ORGANISATION
APPENDIX C	3-MONTH ROLLING CONSTRUCTION PROGRAMME
APPENDIX D	MONITORING LOCATIONS
APPENDIX E	CALIBRATION CERTIFICATES
APPENDIX F	EVENT AND ACTION PLAN
APPENDIX G	MONITORING SCHEDULE
APPENDIX H	DATABASE OF MONITORING RESULT
APPENDIX I	GRAPHICAL PLOTS FOR MONITORING RESULT
APPENDIX J	METEOROLOGICAL DATA
APPENDIX K	WASTE FLOW TABLE
APPENDIX L	ENVIRONMENTAL COMPLAINTS LOG
APPENDIX M	IMPLEMENTATION SCHEDULE FOR ENVIRONMENTAL MITIGATION MEASURES

## 1 INTRODUCTION

### 1.1 PROJECT BACKGROUND

- 1.1.1 Water Supplies Department (WSD) is the Proponent of the Works Contract 7/WSD/21 – *Construction of Siu Ho Wan Water Treatment Works Extension and Siu Ho Wan Raw Water Booster Pumping Station (hereinafter named as the “Works Contract”)*. The Project works predicted by WSD will be undertaken about 34 months. Layout plan of the Project is shown in [Appendix A](#).
- 1.1.2 According to the Environmental Impact Assessment Ordinance (EIAO), the proposed Siu Ho Wan Water Treatment Works Extension is a Designated Project under Schedule 2, which shall be implemented under the Environmental Permit EP-207/2005/A (*hereinafter called the “EP”*). Besides, the works for Siu Ho Wan Raw Water Booster Pumping Station is a non-designated project which mentioned in Section 1.10 of Environmental Monitoring and Audit (EM&A) Manual.
- 1.1.3 The Works Contract construction activities mainly include:-
- Extension of the existing Siu Ho Wan WTW within the existing Siu Ho Wan WTW compound from a capacity of 150,000 m<sup>3</sup>/day to 300,000 m<sup>3</sup>/day
  - Upgrading of the treated/fresh water pumping capacity in the existing Siu Ho Wan Raw Water and Fresh Water Pumping Station within the existing Siu Ho Wan WTW compound from a capacity of 150,000 m<sup>3</sup>/day to 300,000 m<sup>3</sup>/day
  - Construction of the proposed Siu Ho Wan Raw Water Booster Pumping Station and the laying of the associated water mains
- 1.1.4 On 20 March 2022, *China Road and Bridge Corporation* (hereinafter called the “Main Contractor”) awarded the Works Contracts 7/WSD/21. According to EM&A Manual, only air quality monitoring is required to be conducted which related to the works area under Contracts 7/WSD/21 during construction phase of the SHW WTW Extension. Moreover, site inspection and audit is required under the EM&A program to ensure the recommended environmental mitigation measures are implemented properly and effective.
- 1.1.5 The Main-Contractor appointed Action-United Environmental Services & Consulting (AUES) as the Environmental Team of the Project (hereinafter referred as the “ET”) to implement air quality (baseline and impact) monitoring as well as associated duties in accordance with the EM&A Manual stipulation.
- 1.1.6 Some design changes of the Project have been identified after the EIA stage for betterment in the design development. Some of these changes requires supplementary environmental review to address their likely environmental impacts and to identify any additional mitigation measures required for compliance with the EIAO. Supplementary environmental review has been performed for the changes and the review results are presented in the “Review Report on Environmental Impact Assessment (Review Report on EIA)” prepared under “Agreement No. CE 82/2017 (WS)”. Having reviewed the Review Report on EIA, no changes to the environmental monitoring requirement in the EM&A Manual are proposed for the work of SHW WTW Extension.
- 1.1.7 According to the approved EM&A Manual, only air quality is required to be monitored during the construction phase of the Project. As part of the EM&A program, baseline monitoring is required to determine the ambient environmental conditions. Pursuant to the EM&A Manual, baseline environmental monitoring is required to be conducted prior to commencement of the construction works under the Project. Baseline air quality monitoring was conducted from **8 to 21 April 2022**. During the baseline monitoring period, no major construction activities under the Project was observed.
- 1.1.8 As advised by the Contractor, the major construction works under Works Contract was commenced on 24 May 2022. This is the **7<sup>th</sup>** Monthly EM&A Report presenting monitoring results and inspection finding for the Project for the reporting period from **1 to 30 November 2022**.

## **1.2 REPORT STRUCTURE**

1.2.1 The Monthly EM&A Report is structured into the following sections:-

*Section 1 Introduction*

*Section 2 Project Organization and Construction Progress*

*Section 3 Summary of Impact Monitoring Requirements*

*Section 4 Air Quality Monitoring*

*Section 5 Waste Management*

*Section 6 Site Inspections*

*Section 7 Environmental Complaints and Non-Compliances*

*Section 8 Implementation Status of Mitigation Measures*

*Section 9 Conclusions and Recommendations*

## **2 PROJECT ORGANISATION AND CONSTRUCTION PROGRESS**

### **2.1 PROJECT ORGANISATION**

2.1.1 The project organization is shown in [Appendix B](#). The roles and responsibilities of the various parties involved in the EM&A process and the organizational structure of the organizations responsible for implementing the EM&A programme are outlined below.

#### Water Supplies Department (WSD)

2.1.2 WSD is the Project Proponent and the Permit Holder of the EP of the development of the Project and will assume overall responsibility for the project. An Independent Environmental Checker (IEC) shall be employed by WSD to audit the results of the EM&A works carried out by the ET.

#### Environmental Protection Department (EPD)

2.1.3 EPD is the statutory enforcement body for environmental protection matters in Hong Kong.

#### Project Manager's Delegate (PMD)

2.1.4 The *PMD* is responsible for overseeing the construction works and for ensuring that the works are undertaken by the *Contractor* in accordance with the specification and contract requirements. The duties and responsibilities of the *PMD* with respect to EM&A are:

- Supervise the *Contractor's* activities and ensure that the requirements in the EM&A Manual are fully complied with;
- Inform the *Contractor* when action is required to reduce impacts in accordance with the Event and Action Plans;
- Comply with the agreed Event Contingency Plan in the event of any exceedance.

#### The Contractor

2.1.5 The Main *Contractor* is responsible perform construction works and for ensuring that the works are undertaken compliance with the specification and contract requirements. The duties and responsibilities of the Main *Contractor* with respect to EM&A are:

- Employ an ET to undertake monitoring, laboratory analysis and reporting of environmental monitoring and audit;
- Provide information / advice to the ET regarding works activities which may contribute, or be continuing to the generation of adverse environmental conditions;
- Submit proposals on mitigation measures in case of exceedances of Action and Limit levels in accordance with the Event and Action Plans;
- Implement measures to reduce impact whenever Action and Limit levels are exceeded;
- Implement the corrective actions instructed by *PMD*;
- Accompany joint site audit undertaken by the ET; and
- Adhere to the procedures for carrying out complaint investigation.

#### Environmental Team (ET)

2.1.6 The ET is responsible perform implementation EM&A programmes of the Contract Works as stipulated in the Updated EM&A Manual ensure the works are fully compliance with environmental regulations. The duties and responsibilities of the ET with respect to EM&A are:

- Set up all the required environmental monitoring stations;
- Monitor various environmental parameters as required in the EM&A Manual;
- Analyze the EM&A data and review the success of EM&A programme to cost effectively confirm the adequacy of mitigation measures implemented and the validity of the EIA predictions and to identify any adverse environmental impacts arising;
- Carry out site inspection to investigate and audit the *Contractor's* site practice, equipment and work methodologies with respect to pollution control and environmental mitigation, and take proactive actions to pre-empt problems;
- Audit and prepare audit reports on the environmental monitoring data and site environmental conditions;

- Report on the EM&A results to the IEC, *Contractor*, the *PMD* and EPD or its delegated representative;
- Recommend suitable mitigation measures to the *Contractor* in the case of exceedance of Action and Limit levels in accordance with the Event and Action Plans;
- Undertake regular and ad-hoc on-site audits / inspections and report to the *Contractor* and the ER of any potential non-compliance; and
- Follow up and close out non-compliance actions.

*Independent Environmental Checker (IEC)*

2.1.7 The duties and responsibilities of IEC with respect to EM&A are:

- Review the EM&A works performed by the ET (at not less than monthly intervals);
- Audit the monitoring activities and results (at not less than monthly intervals);
- Report the audit results to the *PMD* and EPD in parallel;
- Review the EM&A reports (monthly summary reports) submitted by the ET;
- Review the proposal on mitigation measures submitted by the *Contractor* in accordance with the Event and Action Plans;
- Check the mitigation measures submitted by the *Contractor* in accordance with the Event and Action Plans;
- Check the mitigation measures that have been recommended in the EIA and this Manual, and ensure they are properly implemented in a timely manner, when necessary;
- Report the findings of site inspections and other environmental performance reviews to *PMD* and EPD;
- Coordinate the monitoring and auditing works for all the on-going contracts in the area in order to identify possible sources / causes of exceedances and recommend suitable remedial actions where appropriate; and
- Coordinate the assessment and response to complaints / enquires from locals, green groups, district councils or the public at large.

## 2.2 CONSTRUCTION PROGRESS

2.2.1 The major construction activities conducted under the Contract in the Reporting Period are listed below. The 3-month rolling construction programme is shown in [Appendix C](#).

- Installation of ELS and excavation at WTB and OLB
- Construction of car park barrack at DfMA Yard
- Excavation works for installation of ELS at BPS
- Diversion of OSCG trough
- Construction of chain link fence at DfMA Area
- Erection of Tower Crane at existing barrack

## 2.3 SUMMARY OF ENVIRONMENTAL PERMITS AND LICENCES

2.3.1 Summary of the relevant permits, licences, and/or notifications on environmental protection for the Project are presented in **Table 2-1**.

**Table 2-1 Status of Environmental Licences and Permits of the Contract**

Item	Description	Licence/Permit Status			
		Reference No./ License No./ Account No.	Approval Date	Expiry Date	Status
1	Air Pollution Control (Construction Dust) Regulation	Ref: 477913	23 Mar 2022	N/A	Valid
2	Waste Disposal Regulation – Billing Account for Disposal of Construction Waste	EPD Ref. No: RS02509 Acc. No.: 7043631	08 Apr 2022	N/A	Valid

Item	Description	Licence/Permit Status			
		Reference No./ License No./ Account No.	Approval Date	Expiry Date	Status
3	Chemical Waste Producer Registration	5213-961-C4701-01	31 May 2022	N/A	Valid
4	Water Pollution Control Ordinance – Discharge Licence	WT00041885-2022	8 Sep 2022	30 Sep 2027	Valid
5	Construction Noise Permit	GW-RS0761-22	9 Sep 2022	18 Mar 2023	Valid



### 3 SUMMARY OF IMPACT MONITORING REQUIREMENTS

#### 3.1 GENERAL

- 3.1.1 Only air quality monitoring is required to carry out related to Works contracts *7/WSD/21* during the construction phase to ensure the dust mitigation measures and performance properly implementation.
- 3.1.2 The other environmental monitoring for Works Area of Pui O was related to other Works Contracts and will be implemented by other appointed ET.
- 3.1.3 According to the Review Report on EIA, no changes to the environmental monitoring requirement in the EM&A Manual are proposed for the work of SHW WTW Extension. Air quality monitoring work will be implemented according to the EM&A Manual.

#### 3.2 MONITORING PARAMETERS

- 3.2.1 The EM&A program of construction phase monitoring shall cover the following environmental issues:
- Air quality;
- 3.2.2 A summary of impact monitoring parameters is presented in *Table 3-1*:

**Table 3-1 Summary of Monitoring Parameters**

Environmental Issue	Parameters
Air Quality	<ul style="list-style-type: none"> <li>1-hour TSP by Real-Time Portable Dust Meter( as required in case of complaints); and</li> <li>24-hour TSP by High Volume Air Sampler.</li> </ul>

#### 3.3 MONITORING LOCATIONS

- 3.3.1 According to the Review Report on EIA, air quality monitoring work should be implemented according to the EM&A Manual. As stated in Section 4 of EM&A Manual, there was only one air quality monitoring station designated under SHW WTW Extension. The air quality monitoring locations is listed in *Table 3-2*.

**Table 3-2 Designated Air Quality Monitoring Stations**

Monitoring Station Identification No	Location
SHWAB	Siu Ho Wan WTW Administration Building

#### 3.4 MONITORING FREQUENCY AND PERIOD

- 3.4.1 The requirements of impact monitoring are stipulated in *Sections 2.1.9* of the approved EM&A Manual and presented as follows.

##### Air Quality Monitoring

- 3.4.2 Frequency of impact air quality monitoring is as follows:
- 1-hour TSP 3 times every six days (as required in case of complaints)
  - 24-hour TSP Once every 6 days during course of works.

#### 3.5 MONITORING EQUIPMENT

##### Air Quality Monitoring

- 3.5.1 The 24-hour and 1-hour TSP levels shall be measured by following the standard high volume sampling method as set out in the *Title 40 of the Code of Federal Regulations, Chapter 1 (Part 50), Appendix B*. If the ET proposes to use a direct reading dust meter to measure 1-hour TSP levels, it shall submit sufficient information to the IEC to approve.
- 3.5.2 The filter paper of 24-hour TSP measurement shall be determined by HOKLAS accredited laboratory.



3.5.3 All equipment to be used for air quality monitoring are listed in below table.

**Table 3-3 Air Quality Monitoring Equipment**

Equipment	Model
<b>24-Hr TSP</b>	
High Volume Air Sampler	TISCH High Volume Air Sampler, HVS Model TE-5170*
Calibration Kit	TISCH Model TE-5025A*
<b>1-Hour TSP</b>	
Portable Dust Meter	Sibata LD-3B Laser Dust monitor Particle Mass Profiler & Counter / SidePak™ Personal Aerosol Monitor AM510

\* Instrument was used in the Reporting Period and the calibration certificate could be referred in Appendix E.

### 3.6 MONITORING PROCEDURES

#### 1-hour TSP

3.6.1 Operation of the 1-hour TSP meter will follow manufacturer's Operation and Service Manual.

3.6.2 The 1-hour TSP monitor, brand named "Sibata LD-3B Laser Dust monitor Particle Mass Profiler & Counter" is a portable, battery-operated laser photometer. The 1-hour TSP meter provides a real time 1-hour TSP measurement based on 900 light scattering. The 1-hour TSP monitor consists of the following:

- A pump to draw sample aerosol through the optic chamber where TSP is measured;
- A sheath air system to isolate the aerosol in the chamber to keep the optics clean for maximum reliability; and
- A built-in data logger compatible with Windows based program to facilitate data collection, analysis and reporting.

3.6.3 The 1-hour TSP meter to be used will be within the valid period, calibrated by the manufacturer prior to purchasing. Span check and BG of the instrument will be performed before each monitoring event. A valid calibration certificate is attached in [Appendix E](#).

#### 24-hour TSP

3.6.4 The equipment used for 24-hour TSP measurement is the High Volume Sampler (hereinafter the "HVS") brand named TISCH, Model TE-5170 TSP High Volume Air Sampler, which complied with *EPA Code of Federal Regulation, Appendix B to Part 50*. The HVS consists of the following:

- An anodized aluminum shelter;
- A 8"x10" stainless steel filter holder;
- A blower motor assembly;
- A continuous flow/pressure recorder;
- A motor speed-voltage control/elapsed time indicator;
- A 7-day mechanical timer, and
- A power supply of 220v/50 Hz

3.6.5 For HVS for 24-hour TSP monitoring, the HVS is mounted in a metallic cage with a top for protection and also it is sat on the existing ground or the roof of building. The flow rate of the HVS between 0.6m<sup>3</sup>/min and 1.7m<sup>3</sup>/min will be properly set in accordance with the manufacturer's instruction to within the range recommended in *EPA Code of Federal Regulation, Appendix B to Part 50*. Glass Fiber Filter 8" x 10" of TE-653 will be used for 24-Hour TSP monitoring and would be supplied by laboratory. The general procedures of sampling are described as below:-

- A horizontal platform with appropriate support to secure the samples against gusty wind should be provided;
- Installed with elapsed-time meter with  $\pm 2$  minutes accuracy for 24 hours operation;

- Equipped with a timing/control device with  $\pm 5$  minutes accuracy for 24 hours operation;
- With flow control accuracy for  $\pm 2.5\%$  deviation over 24-hour sampling period;
- No two samplers should be placed less than 2 meters apart;
- The distance between the sampler and an obstacle, such as building, must be at least twice the height that the obstacle protrudes above the sample;
- A minimum of 2 meters of separation from any supporting structure, measured horizontally is required;
- Before placing any filter media at the HVS, the power supply will be checked to ensure the sampler work properly;
- The filter paper will be set to align on the screen of HVS to ensure that the gasket formed an air tight seal on the outer edges of the filter. Then filter holder frame will be tightened to the filter hold with swing bolts. The holding pressure should be sufficient to avoid air leakage at the edge.
- The mechanical timer will be set for a sampling period of 24 hours (00:00 mid-night to 00:00 mid-night next day). Information will be recorded on the field data sheet, which would be included the sampling data, starting time, the weather condition at current and the filter paper ID with the initial weight;
- After sampling, the filter paper will be collected and transfer from the filter holder of the HVS to a sealed envelope and sent to a local HOKLAS accredited laboratory for quantifying.

3.6.6 All the sampled 24-hour TSP filters will be kept in normal air conditioned room conditions, i.e. 70% HR (Relative Humidity) and 25°C, for six months prior to disposal.

3.6.7 The HVS used for 24-hour TSP monitoring will be calibrated before the commencement for sampling, and after in two months interval with the manufacturer's instruction using the NIST-certified standard calibrator (Tisch Calibration Kit Model TE-5025A) to establish a relationship between the follow recorder meter reading in cfm (cubic feet per minute) and the standard flow rate, Qstd, in m<sup>3</sup>/min. Motor brushes of HVS will be regularly replaced of about five hundred hours per time. Valid certificates of the calibration kit and HVS are attached in [Appendix E](#).

### 3.7 DERIVATION OF ACTION/LIMIT (A/L) LEVELS

3.7.1 The baseline results form the basis for determining the environmental acceptance criteria for the impact monitoring. According to the approved Environmental Monitoring and Audit Manual, the air quality criteria were set up, namely Action and Limit levels are listed in **Tables 3-4**.

**Table 3-4 Action and Limit Levels of Air Quality**

Monitoring Station	Action Level ( $\mu\text{g}/\text{m}^3$ )		Limit Level ( $\mu\text{g}/\text{m}^3$ )	
	1-hour TSP	24-hour TSP	1-hour TSP	24-hour TSP
SHWAB	291	170	500	260

### 3.8 METEOROLOGICAL INFORMATION

3.8.1 The meteorological information including wind direction, wind speed, humidity, rainfall, air pressure and temperature is extracted from the Chek Lap Kok Station. Meteorological data are attached in [Appendix J](#).

### 3.9 DATA MANAGEMENT AND DATA QUALITY ASSURANCE / QUALITY CONTROL (QA/QC)

3.9.1 All monitoring data were handled by the ET's in-house data recording and management system.

3.9.2 The monitoring data recorded in the equipment were downloaded directly from the equipment at each monitoring day or after completion of baseline measurement. The downloaded monitoring data were input into a computerized database properly maintained by the ET. The laboratory results were input directly into the computerized database and checked by personnel other than those who input the data.

3.9.3 For monitoring parameters that require laboratory analysis, the local laboratory shall follow the QA/QC requirements as set out under the HOKLAS scheme for the relevant laboratory tests.

## 4 AIR QUALITY MONITORING

### 4.1 GENERAL

- 4.1.1 The air quality monitoring schedule is presented in [Appendix G](#) and the monitoring results are summarised in the following sub-sections.
- 4.1.2 In the reporting Period, no air quality complaint was received, thus no 1-hour TSP monitoring required to conduct according to [Section 2.19](#) of the approved EM&A Manual.

### 4.2 AIR MONITORING RESULTS

- 4.2.1 In the Reporting Period, a total of 5 events 24-hour TSP monitoring were carried out and the monitoring results are summarized in [Table 4-1](#). The detailed 24-hour monitoring data are presented in [Appendix H](#) and the relevant graphical plots are shown in [Appendix I](#).

**Table 4-1 Summary of 24-hour TSP Monitoring Result – SHWAB**

24-hour TSP ( $\mu\text{g}/\text{m}^3$ )	
Date	Meas. Result
4-Nov-22	50
10-Nov-22	66
16-Nov-22	93
22-Nov-22	51
28-Nov-22	38
Average (Range)	<b>60</b> <b>( 38 – 93)</b>

- 4.2.2 As shown in [Tables 4-1](#), all the 24-hour TSP monitoring results were below the Action/Limit Levels. No Notification of Exceedance (NOE) was issued in this Reporting Period.
- 4.2.3 The meteorological data during the impact monitoring days are summarized in [Appendix J](#).

## 5 WASTE MANAGEMENT

### 5.1 GENERAL WASTE MANAGEMENT

5.1.1 Waste management was carried out in accordance with the Waste Management Section in the Environmental Management Plan for the Contract.

### 5.2 RECORDS OF WASTE QUANTITIES

5.2.1 All types of waste arising from the construction works are broadly classified into the following:

- Insert construction and demolition (C&D) material; and
- C&D waste.

5.2.2 The quantities of waste for disposal in this Reporting Month under the Contract are summarised in **Tables 5-1** and **5-2** and the Waste Flow Table as shown in **Appendix K**. Whenever possible, materials were reused on-site as far as practicable.

**Table 5-1 Summary of Quantities of Inert C&D Materials for the Contract**

Type	Quantity in Reporting Month	Disposal / Dumping Ground
Reused in this Contract (Inert) (in T)	0	NA
Reused in other Contracts/ Projects (Inert) (in T)	0	NA
Disposal as Public Fill (Inert) (in T)	6598.800	TM 38

**Table 5-2 Summary of Quantities of C&D Wastes for the Contract**

Type	Quantity in Reporting Month	Disposal / Dumping Ground
Recycled Metal ('000kg)	0	NA
Recycled Paper / Cardboard Packing ('000kg)	0	NA
Recycled Plastic ('000kg)	0	NA
Chemical Wastes ('000kg)	0	NA
General Refuses (in T)	37.250	NENT

## 6 SITE INSPECTIONS

### 6.1 REQUIREMENTS

- 6.1.1 According to the EM&A Manual, the programme of environmental site inspection shall be formulated by ET Leader. Weekly environmental site inspections were carried out to confirm the environmental performance.

### 6.2 FINDINGS / DEFICIENCIES DURING THE REPORTING MONTH

- 6.2.1 In the Reporting Month, joint site inspections to evaluate the site environmental performance were carried out by the representatives of the PMD, ET and the Contractor on **1, 8, 15, 22 and 29 November 2022**. Joint site inspection with PMD, ET, IEC and the Contractor was carried out on **22 November 2022**. No non-compliance was recorded.

- 6.2.2 The findings / deficiencies observed during the weekly site inspections are listed in **Table 6-1**.

**Table 6-1 Site Observations for the Contract**

Date	Findings / Deficiencies	Follow-Up Status
1 November 2022	<ul style="list-style-type: none"> <li>The Contractor was advised to cover dusty materials with tarpaulin sheets at WTB.</li> </ul>	<ul style="list-style-type: none"> <li>Tarpaulin sheets was provided for dust materials.</li> </ul>
8 November 2022	<ul style="list-style-type: none"> <li>Soil and debris cumulated at the site boundary should be cleaned. (WTB)</li> <li>Earth bund/sand bag should be provided for the existing gully near the site boundary to prevent site generated water overflow during rainstorm. (WTB)</li> </ul>	<ul style="list-style-type: none"> <li>Soil and debris at site boundary was removed.</li> <li>Reminder only.</li> </ul>
15 November 2022	<ul style="list-style-type: none"> <li>Debris cumulated in drainage channel should be cleaned. (DfMA Area)</li> </ul>	<ul style="list-style-type: none"> <li>Debris cumulated in drainage channel was cleaned.</li> </ul>
22 November 2022	<ul style="list-style-type: none"> <li>Stockpile of loose material should be covered with tarpaulin when storage on-site. (WTB)</li> </ul>	<ul style="list-style-type: none"> <li>Stockpile was covered with tarpaulin sheets.</li> </ul>
29 November 2022	<ul style="list-style-type: none"> <li>The Contractor was advised to clean the dusty materials at site entrance of WTB.</li> <li>The Contractor was reminded to clean stagnant water on ground at WTB.</li> </ul>	<ul style="list-style-type: none"> <li>Dusty Materials at site entrance was cleaned.</li> <li>Reminder only.</li> </ul>

## 7 ENVIRONMENTAL COMPLAINTS AND NON-COMPLIANCES

### 7.1 ENVIRONMENTAL COMPLAINTS, SUMMONS AND PROSECUTIONS

- 7.1.1 There was no environmental complaint, prosecution or notification of summons received in the Reporting Month.
- 7.1.2 The statistical summary table of the environmental complaints, summons and prosecution are presented in *Tables 7-1, 7-2 and 7-3*. Detailed complaint log for the Contract is presented in *Appendix L*.

**Table 7-1 Statistical Summary of Environmental Complaints**

Reporting Month	Environmental Complaint Statistics		
	Frequency	Cumulative	Project related complaint
23 to 31 October 2022	0	0	0
1 to 30 November 2022	0	0	0

**Table 7-2 Statistical Summary of Environmental Summons**

Reporting Month	Environmental Summons Statistics		
	Frequency	Cumulative	Project related summons
23 to 31 October 2022	0	0	0
1 to 30 November 2022	0	0	0

**Table 7-3 Statistical Summary of Environmental Prosecution**

Reporting Month	Environmental Prosecution Statistics		
	Frequency	Cumulative	Project related prosecution
23 to 31 October 2022	0	0	0
1 to 30 November 2022	0	0	0

## **8 IMPLEMENTATION STATUS OF MITIGATION MEASURES**

### **8.1 GENERAL REQUIREMENTS**

- 8.1.1 The environmental mitigation measures recommended in the ISEMM in the EM&A Manual covered the issues of dust, noise, water, waste, land contamination and ecology and they are summarised and presented in [Appendix M](#).
- 8.1.2 The Contract works under the Project shall be implementing the required environmental mitigation measures according to the EM&A Manual as subject to the site conditions. Environmental mitigation measures generally implemented by the Contract and the implementation status are shown in [Appendix M](#).

### **8.2 TENTATIVE CONSTRUCTION ACTIVITIES IN THE COMING MONTH**

- 8.2.1 According to the information provided by the *Contractor*, the major construction activities under the Contract in the coming month are listed below:
- Pre-boring and sheet piling works
  - Construction of temporary shelter for Temporary Barrack
  - Excavation works
  - Construction of *Project Manager*'s temporary site office
  - Construction of CLP Temporary Transformer Room
  - DN50 Pipe laying for watermain
  - Tree felling works

### **8.3 KEY ISSUES FOR THE COMING MONTH**

- 8.3.1 For dry season, special attention should be paid on the potential construction dust impact since most of the construction sites are adjacent to Siu Ho Wan Sewage Treatment Works. The *Contractor* should fully implement the construction dust mitigation measures as appropriately.
- 8.3.2 All effluent discharge shall fulfill the requirement of Discharge Licence under the Water Pollution Control Ordinance.
- 8.3.3 All other mitigation measures recommended in the Implementation Schedule for Environmental Mitigation Measures of the EM&A Manual should be properly implemented and maintained as far as practicable.

## **9 CONCLUSIONS AND RECOMMENDATIONS**

### **9.1 CONCLUSIONS**

- 9.1.1 As advised by the *Contractor*, the major construction works under Works Contract was commenced on 24 May 2022. This is the 7<sup>th</sup> Monthly EM&A Report presenting monitoring results and inspection finding for the Project for the reporting period from ***1 to 30 November 2022***.
- 9.1.2 In the Reporting Period, no 24-hour TSP monitoring results triggered the Action/Limit level was recorded. No NOE or the associated corrective actions were therefore issued.
- 9.1.3 In the Reporting Month, joint site inspections to evaluate the site environmental performance had been carried out by the representatives of the *PMD*, *ET* and the *Contractor* on ***1, 8, 15, 22 and 29 November 2022***. Joint site inspection with *PMD*, *ET*, *IEC* and the *Contractor* was carried out on ***22 November 2022***. No non-compliance was recorded during the site inspections.
- 9.1.4 In the Reporting Month, no environmental complaint, prosecution or notification of summons was received. In addition, no emergency event related to violation of environmental legislation for illegal dumping and landfilling was received.

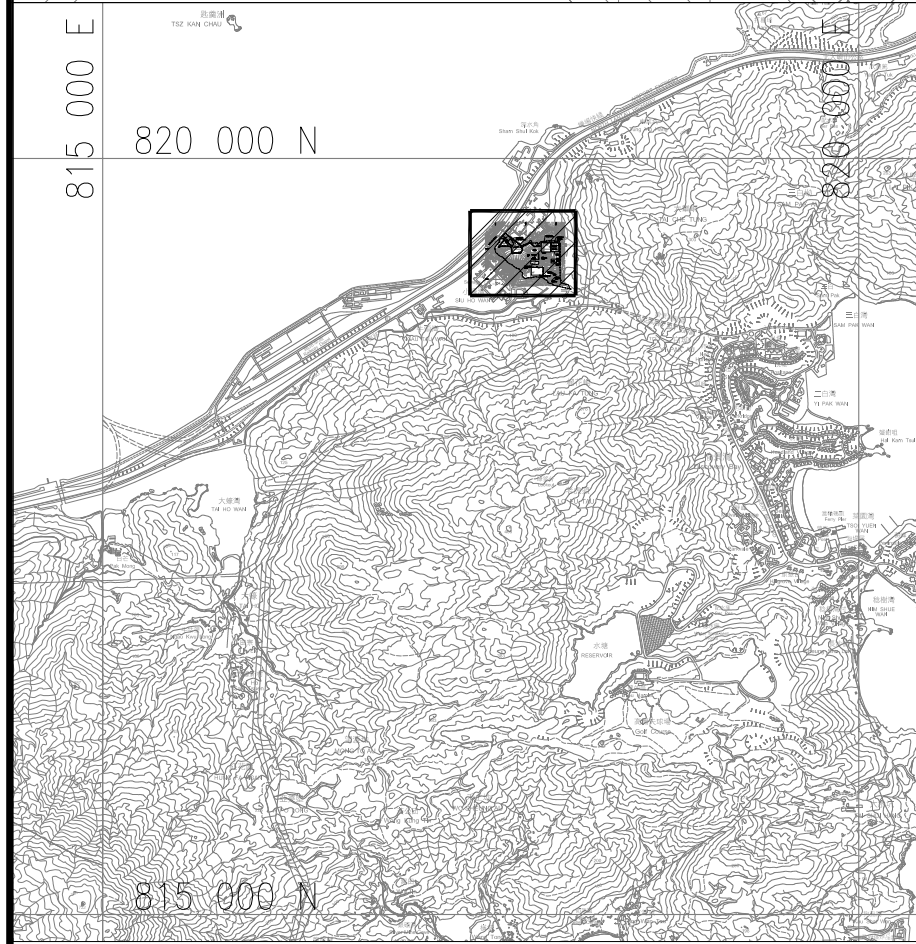
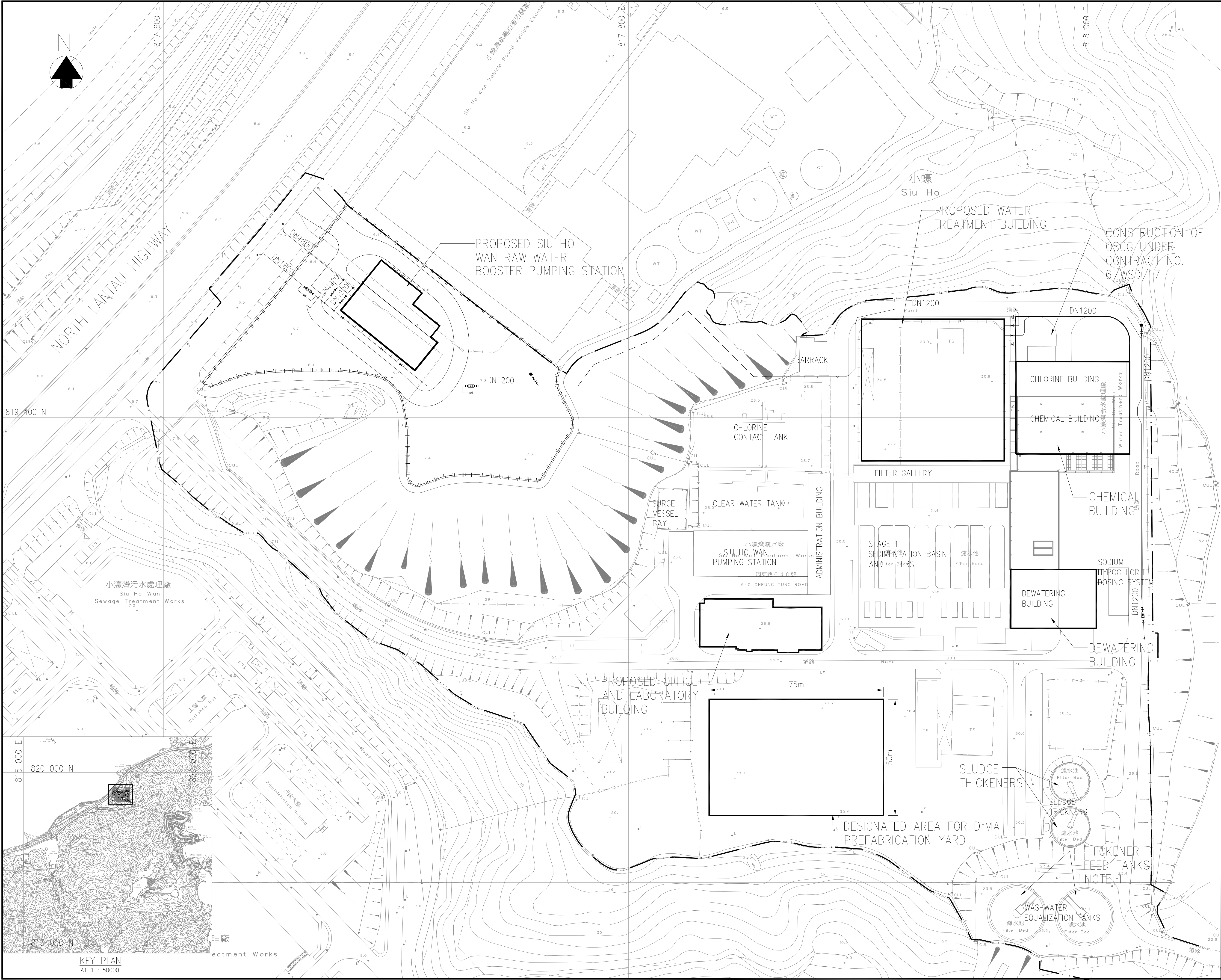
### **9.2 RECOMMENDATIONS**

- 9.2.1 For dry season, special attention should be paid on the potential construction dust impact since most of the construction sites are adjacent to Siu Ho Wan Sewage Treatment Works. The *Contractor* should fully implement the construction dust mitigation measures as appropriately.
- 9.2.2 All effluent discharge shall fulfill the requirement of Discharge Licence under the Water Pollution Control Ordinance.
- 9.2.3 All other mitigation measures recommended in the Implementation Schedule for Environmental Mitigation Measures of the EM&A Manual should be properly implemented and maintained as far as practicable.



## **Appendix A**

### **Layout Plan of the Project**



© Copyright by Binnies Hong Kong Limited

**LEGEND:**

- SITE BOUNDARY
- PROPOSED RAW WATER MAINS (BURIED)
- PROPOSED RAW WATER MAINS (EXPOSED)
- PROPOSED FENCING
- PROPOSED BUILDING WORKS

**NOTE1:**  
THE EXISTING WASHWATER EQUALIZATION TANKS TO BE RENAMED AS "THICKENER FEED TANKS"

0	05/21	ISSUE FOR TENDER DRAWING			JC
Revision	Date	Description			Initial
		Designed	Checked	Drawn	Checked
Initial		CT/CCK	YFC/AS	SZ	JC
Date	05/21	05/21	05/21	05/21	05/21

Approved

Contract No.  
7/WSD/21

Contract Title  
CONSTRUCTION OF SIU HO WAN WATER TREATMENT WORKS EXTENSION AND SIU HO WAN RAW WATER BOOSTER PUMPING STATION

Drawing Title  
SITE LOCATION

Drawing No. 199755A/B&V/GN/00001	Revision 0
-------------------------------------	---------------

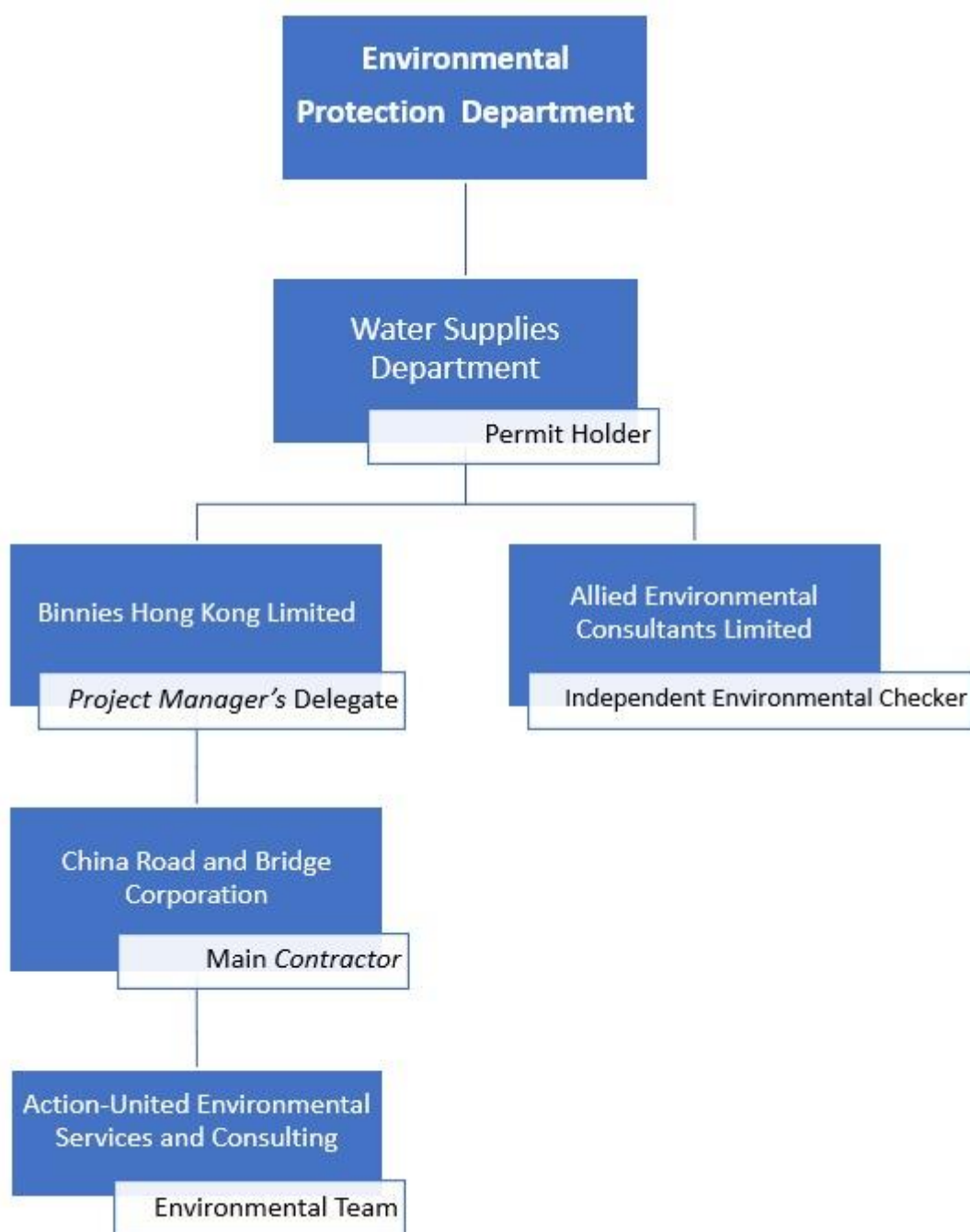
Scale  
A1 1 : 750  
A3 1 : 1500

水務署  
Water Supplies  
Department

binnies  
BINNIES HONG KONG LIMITED  
賓尼斯工程顧問有限公司

## **Appendix B**

### **Project Organisation**



**Contact Details of Key Personnel**

Organisation	Project Role	Position	Name	Tel No.
Binnies Hong Kong Limited	<i>Project Manager's Delegate</i>	Chief Resident Engineer	Mr. Gilbert Ying	6343 1027
		Senior Resident Engineer	Mr. Alex Tung	9080 0079
		Resident Engineer	Ms. Jenny Ng	9267 8638
		Assistant Resident Engineer	Mr. Warren Yeung	6343 1010
China Road and Bridge Corporation	<i>Contractor</i>	Site Agent	Mr. Raymond Mau	5335 9571
		Works Manager	Mr. Chan Ming Tai	9358 7007
		Environmental Officer	Ms. Iris Ho	5611 8325
		Environmental Supervisor	Mr. Patrick Wan	9618 0010
Allied Environmental Consultants Limited	Independent Environmental Checker	Principle Consultant	Ms. Joanne Ng	2815 7028
Action-United Environmental Services and Consulting	Environmental Team	Environmental Team Leader	Mr. Tam Tak Wing	2959 6059
		Environmental Consultant	Ms. Nicola Hon	2959 6059
		Environmental Consultant	Mr. Ben Tam	2959 6059

## **Appendix C**

### **3-month Rolling Construction Programme**



Contract No. 7/WSD/21 Construction of Siu Ho Wan Water Treatment Works Extension and Siu Ho Wan Raw Water Booster Pumping

Data Date:31-Aug-22

Activity ID	Activity Name	Duration	Remaining Duration	Start	Finish	Actual Start	Actual Finish	Total Float	Duration % Complete	2022						2023
										Aug 6	Sep 7	Oct 8	Nov 9	Dec 10	Jan 11	
Construction of Siu Ho Wan Water Treatment Works Extension (		869.0	706.0	22-Apr-22 A	05-Aug-24	22-Apr-22		40.0	18.76%							
Compensation Event (CE)		0.0	0.0	31-Aug-22 A	31-Aug-22 A	31-Aug-22	31-Aug-22		0%							
CE1160	CE no. 018 - Provision of Cross-boundary Logistic Services with Special LandTransport Arrangement for Delivery of Mic	0.0	0.0	31-Aug-22 A		31-Aug-22			100%							
Preliminaries, Contractor's Design,Method Statement Submission and .		838.0	611.0	22-Apr-22 A	02-May-24	22-Apr-22		135.0	27.09%							
Contractor's Design Submission and Approval		272.0	180.0	22-Apr-22 A	26-Feb-23	22-Apr-22		566.0	33.82%							
Major Permanent Works Design		272.0	180.0	23-May-22 A	26-Feb-23	23-May-22		566.0	33.82%							
MDD3000	Process Design Review	90.0	42.0	31-May-22 A	11-Oct-22	31-May-22		36.0	53.33%							
MDD3005	Submission of Process and Instrumentation Diagram (P&ID)	30.0	15.0	15-Jun-22 A	14-Sep-22	15-Jun-22		260.0	50%							
MDD3006	Comment and approval of P&ID	21.0	21.0	15-Sep-22	05-Oct-22			260.0	0%							
MDD3010	Hazard and Operability studies	150.0	65.0	24-May-22 A	03-Nov-22	24-May-22		231.0	56.67%							
MDD3015	Design of earth mat	60.0	40.0	07-Jul-22 A	09-Oct-22	07-Jul-22		59.0	33.33%							
MDD3025	Comments and approval of Design for Ozone Equipment	28.0	10.0	11-Jul-22 A	09-Sep-22	11-Jul-22		26.0	64.29%							
MDD3040	CFD baffle design for intermediate ozone contact tank	120.0	120.0	31-Aug-22	28-Dec-22			147.0	0%							
MDD3046.1	CR drawings submission for BPS	28.0	7.0	10-Aug-22 A	06-Sep-22	10-Aug-22		4.0	75%							
MDD3046.2	Comments and approval of CR drawings submission for BPS	14.0	14.0	07-Sep-22	20-Sep-22			4.0	0%							
MDD3046.3	CR drawings submission for OLB	28.0	7.0	10-Aug-22 A	06-Sep-22	10-Aug-22		4.0	75%							
MDD3046.4	Comments and approval of CR drawings submission for OLB	14.0	14.0	07-Sep-22	20-Sep-22			4.0	0%							
MDD3046.5	CR drawings submission for WTB	28.0	7.0	10-Aug-22 A	06-Sep-22	10-Aug-22		4.0	75%							
MDD3046.6	Comments and approval of CR drawings submission for WTB	14.0	14.0	07-Sep-22	20-Sep-22			4.0	0%							
MDD3050	Design for Manufacture and Assembly(DfMA) works for civil structure works	50.0	25.0	23-May-22 A	30-Sep-22	23-May-22		4.0	50%							
MDD3055	Comments and approval of design for Manufacture and Assembly(DfMA) works (civil structure works)	28.0	14.0	19-Jul-22 A	05-Oct-22	19-Jul-22		4.0	50%							
MDD3065	Design for Manufacture and Assembly(DfMA) works for E&M works	120.0	120.0	31-Aug-22	28-Dec-22			262.0	0%							
MDD3085	Comments and approval of design for DAF Equipment	28.0	14.0	11-Jul-22 A	13-Sep-22	11-Jul-22		164.0	50%							
MDD3095	Comments and approval of Major Pumping Design	30.0	14.0	02-Jul-22 A	13-Sep-22	02-Jul-22		193.0	53.33%							
MDD3105	Comments and approval of design for Hydraulics system	30.0	24.0	04-Jul-22 A	23-Sep-22	04-Jul-22		222.0	20%							
MDD3110	Design for stage 2 architectural works	120.0	120.0	12-Oct-22	08-Feb-23			121.0	0%							
MDD3120	Design for building services (including FSD submission)	90.0	45.0	23-May-22 A	14-Oct-22	23-May-22		97.0	50%							
MDD3125	Comments and approval of design for building services	30.0	30.0	15-Oct-22	13-Nov-22			97.0	0%							
MDD3135	Comments and approval of design for SRGF Equipment	30.0	24.0	11-Jul-22 A	23-Sep-22	11-Jul-22		254.0	20%							
MDD3140	Design for BS Equipment (including emergency genset)	90.0	90.0	12-Oct-22	09-Jan-23			36.0	0%							
MDD3150	Design for WTB POCT & IOCT Equipment	90.0	90.0	15-Oct-22	12-Jan-23			97.0	0%							



中國路橋  
CRBC

Actual Work  
Non-Critical Activity  
Critical Activity  
Milestone

Summary

Date	Revision	Checked	Approved
31-Aug-22	0	CLX	WIM

3 Month Rolling Programme -  
Sep to Nov 2022

(sheet 1 of 6)

# Contract No. 7/WSD/21 Construction of Siu Ho Wan Water Treatment Works Extension and Siu Ho Wan Raw Water Booster Pumping

Data Date:31-Aug-22

Activity ID	Activity Name	Duration	Remaining Duration	Start	Finish	Actual Start	Actual Finish	Total Float	Duration % Complete	2022						2023
										Aug 6	Sep 7	Oct 8	Nov 9	Dec 10	Jan 11	
MDD3160	Design for surge analysis system	90.0	90.0	15-Oct-22	12-Jan-23			97.0	0%							
MDD3185	Comments and approval of design for BACF Equipment	28.0	24.0	11-Jul-22 A	23-Sep-22	11-Jul-22		268.0	14.29%							
MDD3200	Design for Chemical Plants Equipment	180.0	180.0	31-Aug-22	26-Feb-23			55.0	0%							
MDD3320	Design for WTB Inlet Valve Chamber Equipment	90.0	90.0	20-Sep-22	18-Dec-22			230.0	0%							
MDD3340	Design for Sampling System	90.0	90.0	30-Sep-22	28-Dec-22			73.0	0%							
MDD3360	Design for Service Water Equipment	90.0	90.0	30-Oct-22	27-Jan-23			111.0	0%							
MDD3365	Comments and approval of design for Service Water Equipment	30.0	30.0	30-Oct-22	28-Nov-22			317.0	0%							
MDD3380	Design for Lamella & Supernatant Plant	90.0	90.0	31-Aug-22	28-Nov-22			108.0	0%							
MDD3385	Comments and approval of design for Lamella & Supernatant Plant	30.0	30.0	29-Nov-22	28-Dec-22			108.0	0%							
MDD3400	Design for Electrical system	120.0	120.0	30-Oct-22	26-Feb-23			111.0	0%							
MDD3410	Design for DCS	90.0	90.0	30-Sep-22	28-Dec-22			73.0	0%							
MDD3420	Design for near real-time Operation Simulation System (part of existing facilities)	60.0	42.0	11-Jun-22 A	11-Oct-22	11-Jun-22		479.0	30%							
MDD3425	Comments and approval of design for near real-time Operation Simulation System (part of existing facilities)	30.0	30.0	12-Oct-22	10-Nov-22			674.0	0%							
<b>E&amp;M Design and Associated Interfacing Activities between C&amp;S and E&amp;M Team of SHWRWBPS</b>		90.0	67.0	08-Aug-22 A	05-Nov-22	08-Aug-22		6.0	25.56%	E&M Design and Associated Interfacing Activities between C&S and E&M Team of SHWRWBPS						
MDD3500	E&M design	21.0	0.0	08-Aug-22 A	27-Aug-22 A	08-Aug-22	27-Aug-22		100%							
MDD3510	Input to the BIM for coordination	14.0	11.0	28-Aug-22 A	10-Sep-22	28-Aug-22		6.0	21.43%							
MDD3520	Extract for review, amend to address comments	14.0	14.0	11-Sep-22	24-Sep-22			6.0	0%							
MDD3530	Input for civil works requirement and provisions	14.0	14.0	25-Sep-22	08-Oct-22			6.0	0%							
MDD3540	Review of civil works requirement and provisions	14.0	14.0	09-Oct-22	22-Oct-22			6.0	0%							
MDD3550	Amendment to address comment and issue civil works provisions for construction	14.0	14.0	23-Oct-22	05-Nov-22			6.0	0%							
<b>Major Temporary Works Design</b>		212.0	120.0	22-Apr-22 A	28-Dec-22	22-Apr-22		70.0	43.4%	Major Temporary Works Design						
MTW0010	Design for Tower cranes including foundation works	60.0	8.0	22-Apr-22 A	07-Sep-22	22-Apr-22		2.0	86.67%							
MTW0020	ELS design for foundation excavation works for Office and Laboratory Building	45.0	5.0	23-May-22 A	04-Sep-22	23-May-22		5.0	88.89%							
MTW0090	Temporary works design for protection of plant and equipment in Chemical Building	60.0	60.0	31-Aug-22	29-Oct-22			70.0	0%							
MTW0095	ELS design for large diameter water pipes and gate valve chambers	60.0	60.0	30-Oct-22	28-Dec-22			70.0	0%							
<b>General Submission</b>		30.0	0.0	15-Jul-22 A	29-Aug-22 A	15-Jul-22	29-Aug-22		100%	General Submission						
MPW1100	Submission of the drainage management plan	30.0	0.0	15-Jul-22 A	29-Aug-22 A	15-Jul-22	29-Aug-22		100%							
<b>Material Submission</b>		210.0	150.0	05-May-22 A	27-Jan-23	05-May-22		490.0	28.57%	Material Submission						
MAT1030	Equipment Submission(E&M)	210.0	150.0	05-May-22 A	27-Jan-23	05-May-22		490.0	28.57%							
<b>BIM Deliverables</b>		737.0	611.0	20-May-22 A	02-May-24	20-May-22		-7.0	17.1%	BIM Deliverables						
BIMD1010	Existing Conditions Modelling	14.0	14.0	22-Jun-22 A	13-Sep-22	22-Jun-22		59.0	0%							



中國路橋  
CRBC

Actual Work  
Non-Critical Activity  
Critical Activity  
Milestone

Date	Revision	Checked	Approved
31-Aug-22	0	CLX	WIM

3 Month Rolling Programme -  
Sep to Nov 2022

(sheet 2 of 6)



# Contract No. 7/WSD/21 Construction of Siu Ho Wan Water Treatment Works Extension and Siu Ho Wan Raw Water Booster Pumping

Data Date:31-Aug-22

Activity ID	Activity Name	Duration	Remaining Duration	Start	Finish	Actual Start	Actual Finish	Total Float	Duration % Complete	2022						2023
										Aug 6	Sep 7	Oct 8	Nov 9	Dec 10	Jan 11	
BIMD1020	BIM Coordinated Models	447.0	383.0	21-Jun-22 A	17-Sep-23	21-Jun-22		131.0	14.32%							
BIMD1040	Combined Service Drawing (CSD) and Combined Builders Works Drawings (CBWD)	190.0	126.0	24-May-22 A	03-Jan-23	24-May-22		10.0	33.68%							
BIMD1050	4D Modelling	707.0	611.0	20-May-22 A	02-May-24	20-May-22		-7.0	13.58%							
BIMD1060	BIM Model with Point Cloud(s) Integrated	120.0	60.0	30-Jun-22 A	29-Oct-22	30-Jun-22		13.0	50%							
<b>Subcontracting and Procurement</b>		152.0	120.0	13-Jul-22 A	28-Dec-22	13-Jul-22		133.0	21.05%							
<b>Subcontracting</b>		106.0	74.0	13-Jul-22 A	12-Nov-22	13-Jul-22		179.0	30.19%							
MTW1565	Subletting for Precasting works	45.0	6.0	13-Jul-22 A	05-Sep-22	13-Jul-22		206.0	86.67%							
MTW1585	Subletting for waterproofing works	30.0	30.0	31-Aug-22	29-Sep-22			69.0	0%							
MTW1600	Subletting for ABWF works	30.0	30.0	14-Oct-22	12-Nov-22			124.0	0%							
MTW1620	Subletting for Site formation works	30.0	30.0	14-Oct-22	12-Nov-22			179.0	0%							
<b>E&amp;M Equipment Procurement, FAT and Delivery</b>		120.0	120.0	31-Aug-22	28-Dec-22			44.0	0%							
MTW1685	Submission of Equipment test plan	90.0	90.0	31-Aug-22	28-Nov-22			44.0	0%							
MTW1690	Approval of Equipment test plan	30.0	30.0	29-Nov-22	28-Dec-22			44.0	0%							
<b>Particular Submission of Key People and Specially Required Staff</b>		14.0	14.0	15-Nov-22	28-Nov-22			74.0	0%							
MTW2160	Appointment of E&M independent inspection body	14.0	14.0	15-Nov-22	28-Nov-22			74.0	0%							
<b>Method Statement Submission and Approval for Major Construction Works</b>		181.0	119.0	27-Jun-22 A	27-Dec-22	27-Jun-22		406.0	34.25%							
MSS2028	Method statement submission for erection of tower crane	14.0	14.0	08-Sep-22	21-Sep-22			2.0	0%							
MSS2029	Method statement comments and approval for erection of tower crane	21.0	21.0	22-Sep-22	12-Oct-22			2.0	0%							
MSS2030	Method statement submission for structural works for Water Treatment Building	45.0	45.0	31-Aug-22	14-Oct-22			173.0	0%							
MSS2035	Method statement comments and approval for structural works for Water Treatment Building	28.0	28.0	15-Oct-22	11-Nov-22			173.0	0%							
MSS2040	Method statement submission for structural works for Siu Ho Wan Raw Water Booster Pumping Station(SHWRWBPS)	45.0	45.0	31-Aug-22	14-Oct-22			26.0	0%							
MSS2045	Method statement comments and approval for structural works for Siu Ho Wan Raw Water Booster Pumping Station(SHWRWBPS)	28.0	28.0	15-Oct-22	11-Nov-22			26.0	0%							
MSS2050	Method statement submission for executing modifications to the existing Chemical Building	30.0	30.0	30-Oct-22	28-Nov-22			147.0	0%							
MSS2055	Method statement comments and approval for executing modifications to the existing Chemical Building	28.0	28.0	29-Nov-22	26-Dec-22			147.0	0%							
MSS2056	Method statement submission for ELS works for Office and Laboratory Building	30.0	10.0	27-Jun-22 A	09-Sep-22	27-Jun-22		0.0	66.67%							
MSS2057	Method statement comments and approval for Office and Laboratory Building	14.0	14.0	10-Sep-22	23-Sep-22			0.0	0%							
MSS2060	Method statement submission for structural works for Office and Laboratory Building	45.0	45.0	31-Aug-22	14-Oct-22			30.0	0%							
MSS2065	Method statement comments and approval for structural works for Office and Laboratory Building	28.0	28.0	15-Oct-22	11-Nov-22			30.0	0%							
MSS2100	Method statement submission for designing and implementing energy efficiency and optimization for BS	35.0	35.0	07-Oct-22	10-Nov-22			342.0	0%							
MSS2105	Method statement comments and approval for designing and implementing energy efficiency and optimization for BS	28.0	28.0	11-Nov-22	08-Dec-22			342.0	0%							
MSS2110	Method statement submission for modification of Chlorination Building	35.0	35.0	07-Oct-22	10-Nov-22			323.0	0%							



中國路橋  
CRBC

Actual Work  
Non-Critical Activity  
Critical Activity  
Milestone

Summary

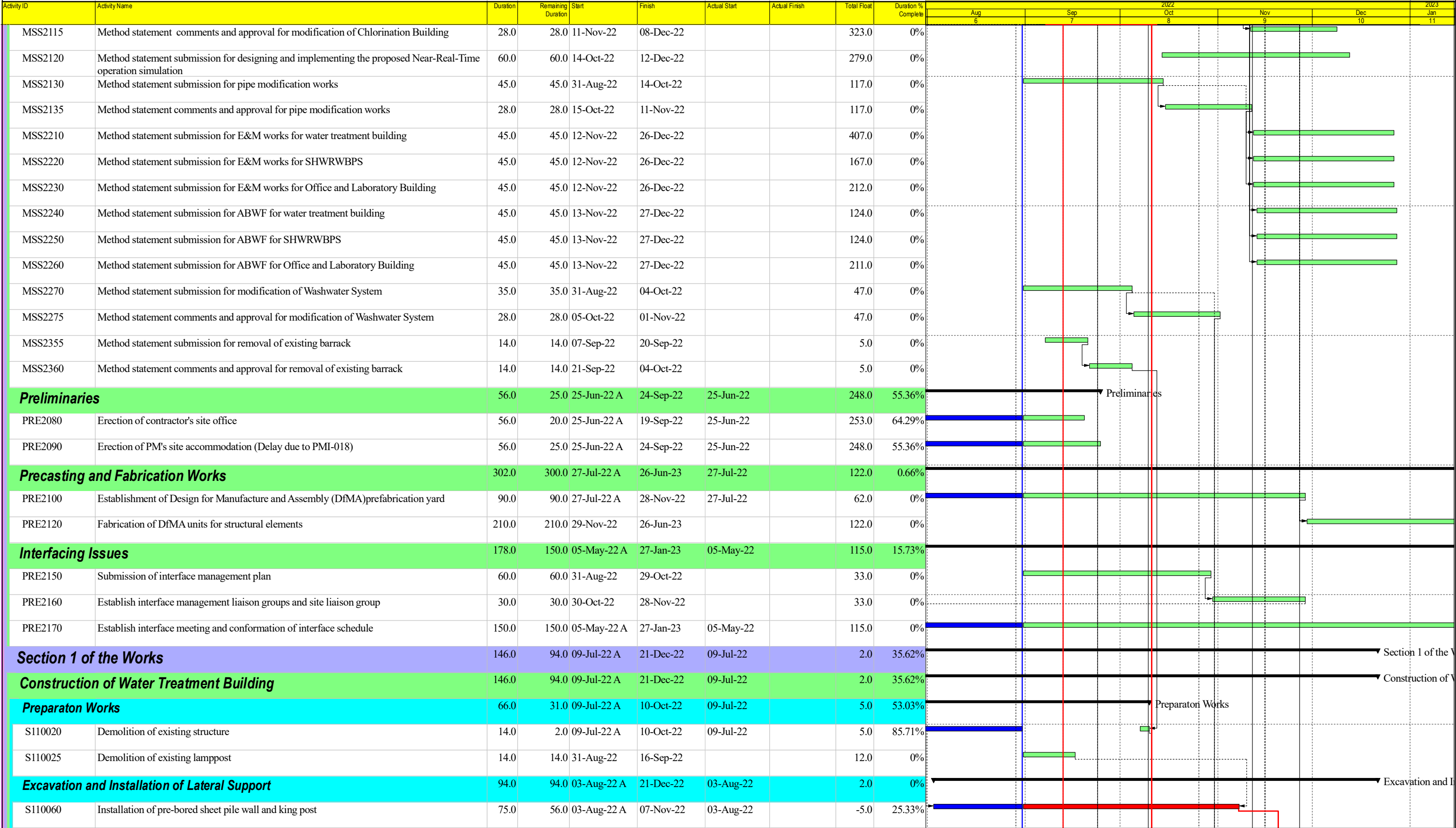
Date	Revision	Checked	Approved
31-Aug-22	0	CLX	WIM

3 Month Rolling Programme -  
Sep to Nov 2022

(sheet 3 of 6)

Contract No. 7/WSD/21 Construction of Siu Ho Wan Water Treatment Works Extension and Siu Ho Wan Raw Water Booster Pumping

Data Date:31-Aug-22



中國路橋  
CRBC

- Actual Work
- Non-Critical Activity
- Critical Activity
- Milestone

Summary

Date	Revision	Checked	Approved
31-Aug-22	0	CLX	WIM

3 Month Rolling Programme -  
Sep to Nov 2022

(sheet 4 of 6)

Contract No. 7/WSD/21 Construction of Siu Ho Wan Water Treatment Works Extension and Siu Ho Wan Raw Water Booster Pumping

Data Date:31-Aug-22

Activity ID	Activity Name	Duration	Remaining Duration	Start	Finish	Actual Start	Actual Finish	Total Float	Duration % Complete	2022						2023
										Aug 6	Sep 7	Oct 8	Nov 9	Dec 10	Jan 11	
S110065	Grouting works	21.0	21.0	25-Oct-22	17-Nov-22			-5.0	0%							
S110080	Installation of dewatering system	21.0	21.0	25-Oct-22	17-Nov-22			-5.0	0%							
S110115	Erection of tower crane including testing	60.0	60.0	13-Oct-22	21-Dec-22			2.0	0%							
S110120	Excavation to +29.5mPD	8.0	8.0	18-Nov-22	26-Nov-22			-5.0	0%							
S110140	Installation of 1st layer of waling and strut	18.0	18.0	23-Nov-22	13-Dec-22			-5.0	0%							
Construction of Siu Ho Wan Raw Water Booster Pumping Station and Pipe		112.0	87.0	02-Aug-22 A	13-Dec-22	02-Aug-22		-5.0	22.32%							Construction of Siu Ho
Excavation and Installation of Lateral Support		112.0	87.0	02-Aug-22 A	13-Dec-22	02-Aug-22		-5.0	22.32%							Excavation and Installa
S110950	Installation of pre-bore sheetpile wall	56.0	37.0	02-Aug-22 A	15-Oct-22	02-Aug-22		-5.0	33.93%							
S110985	Excavation to the formation level	50.0	50.0	17-Oct-22	13-Dec-22			-5.0	0%							
Construction of Office and Laboratory Building		85.0	85.0	31-Aug-22	10-Dec-22			0.0	0%							Construction of Office an
Excavation and Installation of Lateral Support		85.0	85.0	31-Aug-22	10-Dec-22			0.0	0%							Excavation and Installatio
S120040	Demolition of existing ground slab	20.0	20.0	31-Aug-22	23-Sep-22			0.0	0%							
S120045	Cable diversion by others	20.0	20.0	05-Sep-22	28-Sep-22			0.0	0%							
S120046	Diversion of drainage	20.0	20.0	05-Sep-22	28-Sep-22			0.0	0%							
S120050	Installation of sheetpile wall	35.0	35.0	15-Sep-22	27-Oct-22			0.0	0%							
S120060	Excavation to the strut level	10.0	10.0	28-Oct-22	08-Nov-22			0.0	0%							
S120065	Installation of waling and strut	14.0	14.0	09-Nov-22	24-Nov-22			0.0	0%							
S120070	Further excavation down to the formation level	14.0	14.0	25-Nov-22	10-Dec-22			0.0	0%							
Section 2 of the Works		768.0	706.0	15-Jun-22 A	05-Aug-24	15-Jun-22		10.0	8.07%							
Water Treatment Building		768.0	706.0	15-Jun-22 A	05-Aug-24	15-Jun-22		10.0	8.07%							
Statutory Submission schedule		768.0	706.0	15-Jun-22 A	05-Aug-24	15-Jun-22		10.0	8.07%							
S210050	Revised GBP Submission (WTB / O&LB/BPS)	90.0	30.0	15-Jun-22 A	29-Sep-22	15-Jun-22		686.0	66.67%							
S210060	DG (Ozone) installation approval - dwg & layout by FSD for WTB	680.0	680.0	26-Sep-22	05-Aug-24			10.0	0%							
Mechanical Works		122.0	122.0	12-Oct-22	10-Feb-23			5.0	0%							
MDD3390	Design for Lifting Appliance	122.0	122.0	12-Oct-22	10-Feb-23			5.0	0%							
Washwater System		120.0	120.0	02-Nov-22	28-Mar-23			40.0	0%							
S223620	Modification of washwater equalization tanks No.1 and No.2	120.0	120.0	02-Nov-22	28-Mar-23			40.0	0%							
Chemical Building		90.0	90.0	29-Nov-22	20-Mar-23			89.0	0%							
Equipment Procurement, Manufacture, FAT and Delivery		90.0	90.0	29-Nov-22	20-Mar-23			89.0	0%							
S223710	Equipment manufacture,FAT and delivery	90.0	90.0	29-Nov-22	20-Mar-23			89.0	0%							
Siu Ho Wan Pumping Station		180.0	180.0	12-Oct-22	22-May-23			287.0	0%							



中國路橋  
CRBC

- Actual Work
- Non-Critical Activity
- Critical Activity
- Milestone

Summary

Date	Revision	Checked	Approved
31-Aug-22	0	CLX	WIM

3 Month Rolling Programme -  
Sep to Nov 2022

(sheet 5 of 6)

Contract No. 7/WSD/21 Construction of Siu Ho Wan Water Treatment Works Extension and Siu Ho Wan Raw Water Booster Pumping

Data Date:31-Aug-22

Activity ID	Activity Name	Duration	Remaining Duration	Start	Finish	Actual Start	Actual Finish	Total Float	Duration % Complete	2022						2023
										Aug	Sep	Oct	Nov	Dec	Jan	
S224050	Modification of backwash pump to stream IIA SRGF	180.0	180.0	12-Oct-22	22-May-23			287.0	0%	6	7	8	9	10	11	
Section 3 of the Works		330.0	330.0	31-Aug-22	26-Jul-23			193.0	0%							
Siu Ho Wan Raw Water Booster Pumping Station		330.0	330.0	31-Aug-22	26-Jul-23			193.0	0%							
Equipment Procurement, Manufacture, FAT and Delivery		330.0	330.0	31-Aug-22	26-Jul-23			193.0	0%							
S312000	Procurement of process and E&M equipment	60.0	60.0	31-Aug-22	29-Oct-22			193.0	0%							
S312020	Manufacture,FAT and delivery of process and E&M equipment	270.0	270.0	30-Oct-22	26-Jul-23			193.0	0%							
Section 3A of the Works - Entrustment Works		20.0	20.0	14-Nov-22	06-Dec-22			142.0	0%							
Slope Works		20.0	20.0	14-Nov-22	06-Dec-22			142.0	0%							
S3A1005	Replacement of existing fill by no-file concrete for slope 10NW-C/C43	20.0	20.0	14-Nov-22	06-Dec-22			142.0	0%							

Section 3A of the Works - Entrustment Works

Slope Works



中國路橋  
CRBC

- Actual Work
- Non-Critical Activity
- Critical Activity
- Milestone

Summary

Date	Revision	Checked	Approved
31-Aug-22	0	CLX	WIM

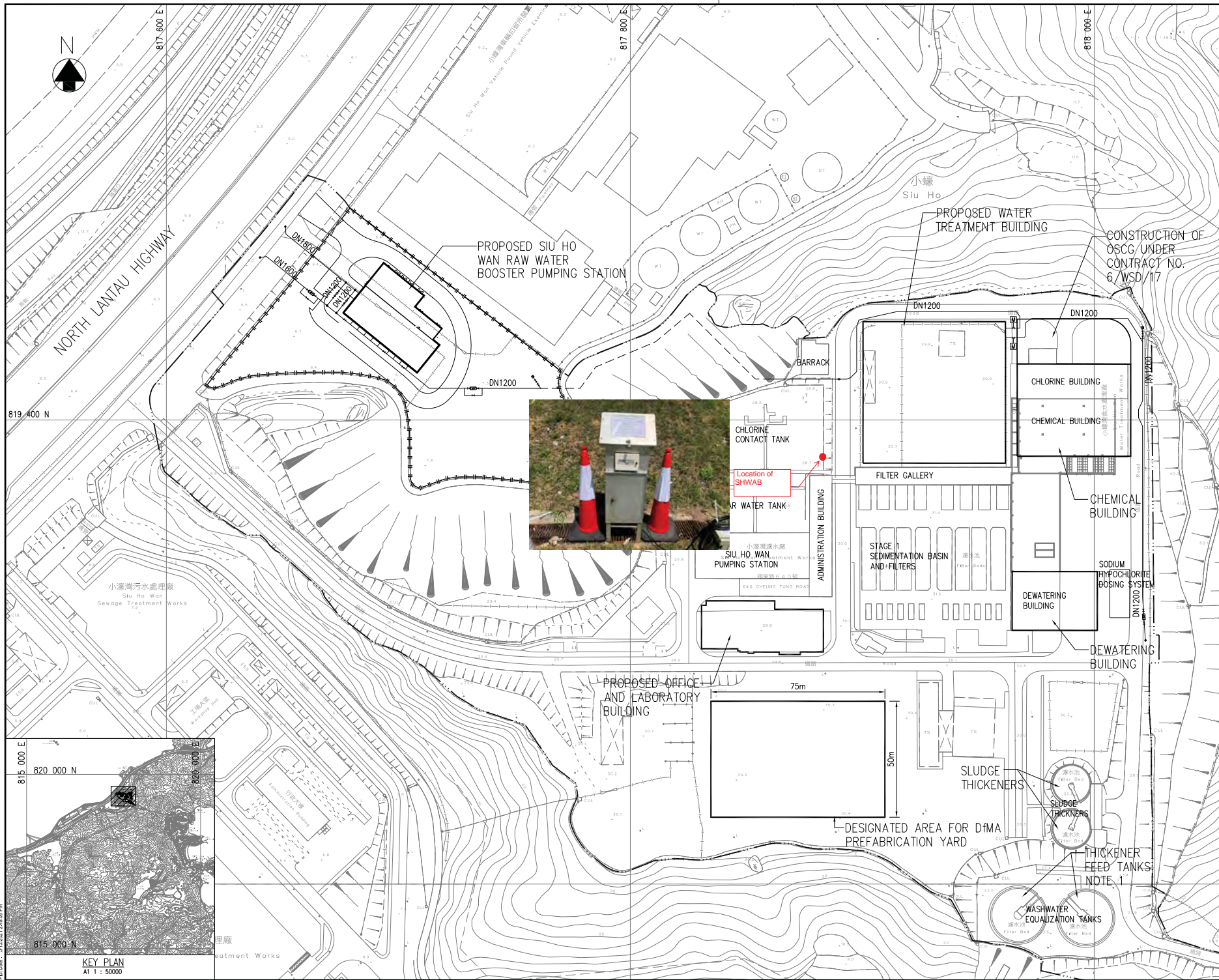
3 Month Rolling Programme -  
Sep to Nov 2022

(sheet 6 of 6)

## **Appendix D**

### **Monitoring Locations**





© Copyright by Binnie Hong Kong Limited

**LEGEND:**

- SITE BOUNDARY
- - - - PROPOSED RAW WATER MAINS (BURIED)
- - - - PROPOSED RAW WATER MAINS (EXPOSED)
- ||-||- PROPOSED FENCING
- PROPOSED BUILDING WORKS

**NOTE 1:**  
THE EXISTING WASHWATER EQUALIZATION TANKS TO BE RENAMED AS "THICKENER FEED TANKS"

Revision	Date	Description	Drawn	Checked	Initial
0	05/21	ISSUE FOR TENDER DRAWING	JC		
Initial	05/21		YFC/AS	SZ	JC
Initial	05/21		05/21	05/21	05/21

Approved

*James Chan*

Contract No.

7/WS0/21

Contract Title

CONSTRUCTION OF SIU HO WAN WATER TREATMENT WORKS EXTENSION AND SIU HO WAN RAW WATER BOOSTER PUMPING STATION

Drawing Title

SITE LOCATION

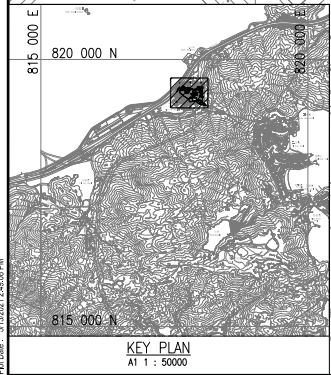
Drawing No.	Revision
199755A/B&V/GN/00001	0

Scale

A1 1 : 750  
A3 1 : 1500

水務署  
Water Supplies Department

**binnies**  
BINNIES HONG KONG LIMITED  
寶尼新工程顧問有限公司



## **Appendix E**

### **Calibration Certificates**

## TSP SAMPLER CALIBRATION CALCULATION SPREADSHEET

Location : Siu Ho Wan WTW Administration  
 Location ID : SHWAB  
 Name and Model: TISCH HVS Model TE-5170

Date of Calibration: 29-Sep-22  
 Next Calibration Date: 29-Nov-22  
 Technician: Eric

### CONDITIONS

Sea Level Pressure (hPa)	1012.3	Corrected Pressure (mm Hg)	759.225
Temperature (°C)	26.4	Temperature (K)	299

### CALIBRATION ORIFICE

Make->	TISCH	Qstd Slope ->	1.99838
Model->	5025A	Qstd Intercept ->	-0.00903
Serial # ->	1612		

### CALIBRATION

Plate No.	H2O (L) (in)	H2O (R) (in)	H2O (in)	Qstd (m3/min)	I (chart)	IC corrected	LINEAR REGRESSION
18	5.60	5.60	11.2	1.674	56	55.71	Slope = 30.7320 Intercept = 5.0803 Corr. coeff. = 0.9957
13	4.40	4.40	8.8	1.485	51	50.74	
10	3.30	3.30	6.6	1.286	46	45.76	
7	2.30	2.30	4.6	1.075	39	38.80	
5	1.40	1.40	2.8	0.839	30	29.84	

#### Calculations :

$$Qstd = 1/m[\text{Sqrt}(H2O(Pa/Pstd)(Tstd/Ta))]-b]$$

$$IC = I[\text{Sqrt}(Pa/Pstd)(Tstd/Ta)]$$

Qstd = standard flow rate

IC = corrected chart responses

I = actual chart response

m = calibrator Qstd slope

b = calibrator Qstd intercept

Ta = actual temperature during calibration ( deg K

Pstd = actual pressure during calibration ( mm Hg

#### For subsequent calculation of sampler flow:

$$1/m((I)[\text{Sqrt}(298/Tav)(Pav/760)]-b)$$

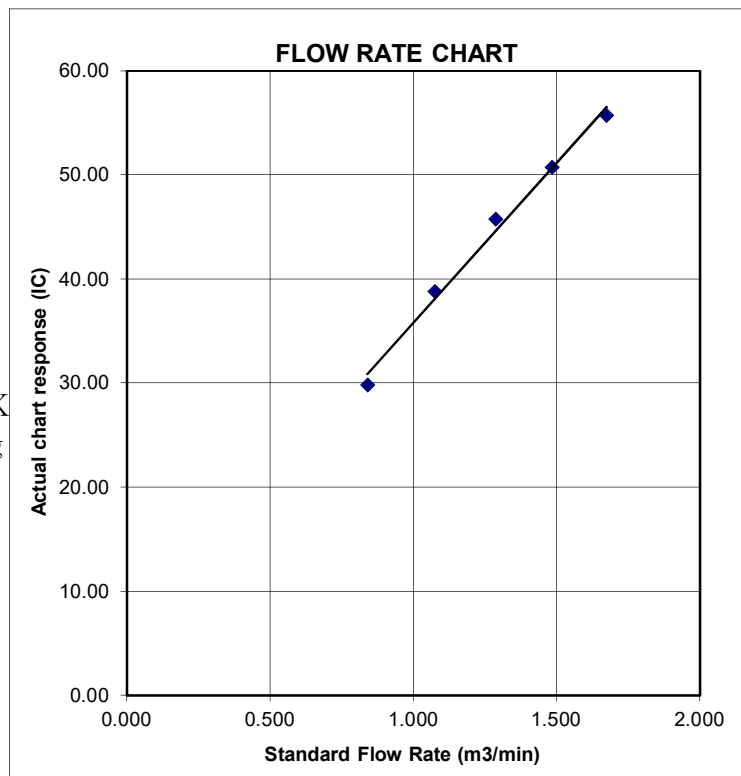
m = sampler slope

b = sampler intercept

I = chart response

Tav = daily average temperature

Pav = daily average pressure







# Certificate of Calibration

## Calibration Certification Information

Cal. Date:	December 27, 2021	Rootsmeter S/N:	438320	Ta:	295	°K
Operator:	Jim Tisch	Pa:	740.4			mm Hg
Calibration Model #:	TE-5025A	Calibrator S/N:	1612			

Run	Vol. Init (m3)	Vol. Final (m3)	ΔVol. (m3)	ΔTime (min)	ΔP (mm Hg)	ΔH (in H2O)
1	1	2	1	1.3890	3.2	2.00
2	3	4	1	0.9760	6.4	4.00
3	5	6	1	0.8740	7.9	5.00
4	7	8	1	0.8320	8.8	5.50
5	9	10	1	0.6870	12.7	8.00

## Data Tabulation

Vstd (m3)	Qstd (x-axis)	$\sqrt{\Delta H \left( \frac{Pa}{Pstd} \right) \left( \frac{Tstd}{Ta} \right)}$ (y-axis)	Va	Qa (x-axis)	$\sqrt{\Delta H \left( \frac{Ta}{Pa} \right)}$ (y-axis)
0.9799	0.7055	1.4029	0.9957	0.7168	0.8927
0.9756	0.9996	1.9841	0.9914	1.0157	1.2624
0.9736	1.1140	2.2183	0.9893	1.1320	1.4114
0.9724	1.1688	2.3265	0.9881	1.1876	1.4803
0.9673	1.4079	2.8059	0.9828	1.4306	1.7853
<b>QSTD</b>	m=	1.99838	<b>QA</b>	m=	1.25135
	b=	-0.00903		b=	-0.00574
	r=	0.99999		r=	0.99999

## Calculations

Vstd=	$\Delta Vol((Pa-\Delta P)/Pstd)(Tstd/Ta)$	Va=	$\Delta Vol((Pa-\Delta P)/Pa)$
Qstd=	Vstd/ΔTime	Qa=	Va/ΔTime
For subsequent flow rate calculations:			
Qstd= $1/m \left( \left( \sqrt{\Delta H \left( \frac{Pa}{Pstd} \right) \left( \frac{Tstd}{Ta} \right)} \right) - b \right)$		Qa= $1/m \left( \left( \sqrt{\Delta H \left( \frac{Ta}{Pa} \right)} \right) - b \right)$	

## Standard Conditions

Tstd:	298.15 °K
Pstd:	760 mm Hg
<b>Key</b>	
ΔH: calibrator manometer reading (in H2O)	
ΔP: rootsmeter manometer reading (mm Hg)	
Ta: actual absolute temperature (°K)	
Pa: actual barometric pressure (mm Hg)	
b: intercept	
m: slope	

## RECALIBRATION

US EPA recommends annual recalibration per 1998 40 Code of Federal Regulations Part 50 to 51, Appendix B to Part 50, Reference Method for the Determination of Suspended Particulate Matter in the Atmosphere, 9.2.17, page 30

## **Appendix F**

### **Event and Action Plan**

**Event Action Plan for Air Quality**

Event	Action			
	ET	IEC	PMD	Contractor
Action Level exceedance for one sample	<ol style="list-style-type: none"> <li>1. Identify source, investigate the causes of exceedance and propose remedial measures;</li> <li>2. Inform IEC, <i>PMD</i> and <i>Contractor</i>;</li> <li>3. Repeat measurement to confirm finding; and</li> <li>4. Increase monitoring frequency to daily.</li> </ol>	<ol style="list-style-type: none"> <li>1. Check monitoring data submitted by ET;</li> <li>2. Check <i>Contractor</i>'s working method; and</li> <li>3. Review and advise the ET and <i>PMD</i> on the effectiveness of the proposed remedial measures.</li> </ol>	<ol style="list-style-type: none"> <li>1. Notify <i>Contractor</i>.</li> </ol>	<ol style="list-style-type: none"> <li>1. Identify source, investigate the causes of exceedance and propose remedial measures</li> <li>2. Rectify any unacceptable practice and implement remedial measures; and</li> <li>3. Amend working methods agreed with <i>PMD</i> if appropriate.</li> </ol>
Action Level exceedance for two or more consecutive samples	<ol style="list-style-type: none"> <li>1. Identify source, investigate the causes of exceedance and propose remedial measures;</li> <li>2. Inform IEC, <i>PMD</i> and <i>Contractor</i>;</li> <li>3. Advise the <i>PMD</i> and <i>Contractor</i> on the effectiveness of the proposed remedial measures;</li> <li>4. Repeat measurements to confirm findings;</li> <li>5. Increase monitoring frequency to daily;</li> <li>6. Discuss with IEC, <i>PMD</i> and <i>Contractor</i> on remedial actions required;</li> <li>7. If exceedance continues, arrange meeting with IEC and <i>PMD</i>; and</li> <li>8. If exceedance stops, cease additional monitoring.</li> </ol>	<ol style="list-style-type: none"> <li>1. Check monitoring data submitted by ET;</li> <li>2. Check <i>Contractor</i>'s working method;</li> <li>3. Discuss with ET and <i>Contractor</i> on possible remedial measures;</li> <li>4. Advise the ET and <i>PMD</i> on the effectiveness of the proposed remedial measures; and</li> <li>5. Supervise Implementation of remedial measures.</li> </ol>	<ol style="list-style-type: none"> <li>1. Confirm receipt of notification of failure in writing;</li> <li>2. Notify <i>Contractor</i>; and</li> <li>3. Supervise and ensure remedial measures properly implemented.</li> </ol>	<ol style="list-style-type: none"> <li>1. Identify source, investigate the causes of exceedance and propose remedial measures</li> <li>2. Submit proposals for remedial actions to <i>PMD</i> with a copy to ET and IEC within 3 working days of notification;</li> <li>3. Implement the agreed proposals; and</li> <li>4. Amend proposal if appropriate.</li> </ol>
Limit Level exceedance for one sample	<ol style="list-style-type: none"> <li>1. Identify source, investigate the causes of exceedance and propose remedial measures;</li> <li>2. Inform <i>PMD</i>, <i>Contractor</i>, IEC and EPD;</li> </ol>	<ol style="list-style-type: none"> <li>1. Check monitoring data submitted by ET;</li> <li>2. Check <i>Contractor</i>'s working method;</li> <li>3. Discuss with ET, <i>PMD</i> and <i>Contractor</i> on possible remedial</li> </ol>	<ol style="list-style-type: none"> <li>1. Confirm receipt of notification of failure in writing;</li> <li>2. Notify <i>Contractor</i>; and</li> <li>3. Supervise and ensure remedial measures properly implemented.</li> </ol>	<ol style="list-style-type: none"> <li>1. Identify source, investigate the causes of exceedance and propose remedial measures;</li> <li>2. Take immediate action to avoid further exceedance;</li> </ol>

	<ol style="list-style-type: none"> <li>Repeat measurement to confirm finding;</li> <li>Increase monitoring frequency to daily;</li> <li>Assess effectiveness of <i>Contractor's</i> remedial actions and keep IEC, EPD and <i>PMD</i> informed of the results.</li> </ol>	<ol style="list-style-type: none"> <li>Advise the <i>PMD</i> and ET on the effectiveness of the proposed remedial measures;</li> <li>Supervise implementation of remedial measures.</li> </ol>		<ol style="list-style-type: none"> <li>Submit proposals for remedial actions to <i>PMD</i> with a copy to ET and IEC within 3 working days of notification;</li> <li>Implement the agreed proposals; and</li> <li>Amend proposal if appropriate.</li> </ol>
Limit Level exceedance for two or more consecutive samples	<ol style="list-style-type: none"> <li>Notify IEC, <i>PMD</i>, <i>Contractor</i> and EPD;</li> <li>Identify source;</li> <li>Repeat measurement to confirm findings;</li> <li>Increase monitoring frequency to daily;</li> <li>Carry out analysis of <i>Contractor's</i> working procedures to determine possible mitigation to be implemented;</li> <li>Arrange meeting with IEC, <i>Contractor</i> and <i>PMD</i> to discuss the remedial actions to be taken;</li> <li>Assess effectiveness of <i>Contractor's</i> remedial actions and keep IEC, EPD and <i>PMD</i> informed of the results;</li> <li>If exceedance stops, cease additional monitoring.</li> </ol>	<ol style="list-style-type: none"> <li>Check monitoring data submitted by ET;</li> <li>Check <i>Contractor's</i> working method;</li> <li>Discuss amongst <i>PMD</i>, ET, and <i>Contractor</i> on the potential remedial actions;</li> <li>Review <i>Contractor's</i> remedial actions whenever necessary to assure their effectiveness and advise the <i>PMD</i> accordingly; and</li> <li>Supervise the implementation of remedial measures.</li> </ol>	<ol style="list-style-type: none"> <li>Confirm receipt of notification of failure in writing;</li> <li>Notify <i>Contractor</i>;</li> <li>In consultation with the ET and IEC, agree with the <i>Contractor</i> on the remedial measures to be implemented;</li> <li>Supervise and ensure remedial measures properly implemented; and</li> <li>If exceedance continues, consider what portion of the work is responsible and instruct the <i>Contractor</i> to stop that portion of work until the exceedance is abated.</li> </ol>	<ol style="list-style-type: none"> <li>Identify source, investigate the causes of exceedance and propose remedial measures;</li> <li>Take immediate action to avoid further exceedance;</li> <li>Submit proposals for remedial actions to <i>PMD</i> with a copy to ET and IEC within 3 working days of notification;</li> <li>Implement the agreed proposals;</li> <li>Resubmit proposals if problem still not under control;</li> <li>Stop the relevant portion of works as determined by the <i>PMD</i> until the exceedance is abated.</li> </ol>

Note:

ET – Environmental Team

IEC – Independent Environmental Checker

*PMD* – Project Manager's Delegate

## **Appendix G**

### **Monitoring Schedule**

**Impact Air Quality Monitoring Schedule for the Reporting Period**

Date		Air Quality Monitoring (24-Hour TSP)
Tue	1-Nov-22	
Wed	2-Nov-22	
Thu	3-Nov-22	
Fri	4-Nov-22	✓
Sat	5-Nov-22	
Sun	6-Nov-22	
Mon	7-Nov-22	
Tue	8-Nov-22	
Wed	9-Nov-22	
Thu	10-Nov-22	✓
Fri	11-Nov-22	
Sat	12-Nov-22	
Sun	13-Nov-22	
Mon	14-Nov-22	
Tue	15-Nov-22	
Wed	16-Nov-22	✓
Thu	17-Nov-22	
Fri	18-Nov-22	
Sat	19-Nov-22	
Sun	20-Nov-22	
Mon	21-Nov-22	
Tue	22-Nov-22	✓
Wed	23-Nov-22	
Thu	24-Nov-22	
Fri	25-Nov-22	
Sat	26-Nov-22	
Sun	27-Nov-22	
Mon	28-Nov-22	✓
Tue	29-Nov-22	
Wed	30-Nov-22	

✓	Monitoring Day
	Sunday or Public Holiday

**Impact Air Quality Monitoring Schedule for next Reporting Period**

Date		Air Quality Monitoring (24-Hour TSP)
Thu	1-Dec-22	
Fri	2-Dec-22	
Sat	3-Dec-22	✓
Sun	4-Dec-22	
Mon	5-Dec-22	
Tue	6-Dec-22	
Wed	7-Dec-22	
Thu	8-Dec-22	
Fri	9-Dec-22	✓
Sat	10-Dec-22	
Sun	11-Dec-22	
Mon	12-Dec-22	
Tue	13-Dec-22	
Wed	14-Dec-22	
Thu	15-Dec-22	✓
Fri	16-Dec-22	
Sat	17-Dec-22	
Sun	18-Dec-22	
Mon	19-Dec-22	
Tue	20-Dec-22	
Wed	21-Dec-22	✓
Thu	22-Dec-22	
Fri	23-Dec-22	
Sat	24-Dec-22	✓
Sun	25-Dec-22	
Mon	26-Dec-22	
Tue	27-Dec-22	
Wed	28-Dec-22	
Thu	29-Dec-22	
Fri	30-Dec-22	✓
Sat	31-Dec-22	

✓	Monitoring Day
	Sunday or Public Holiday

## **Appendix H**

### **Database of Monitoring Result**

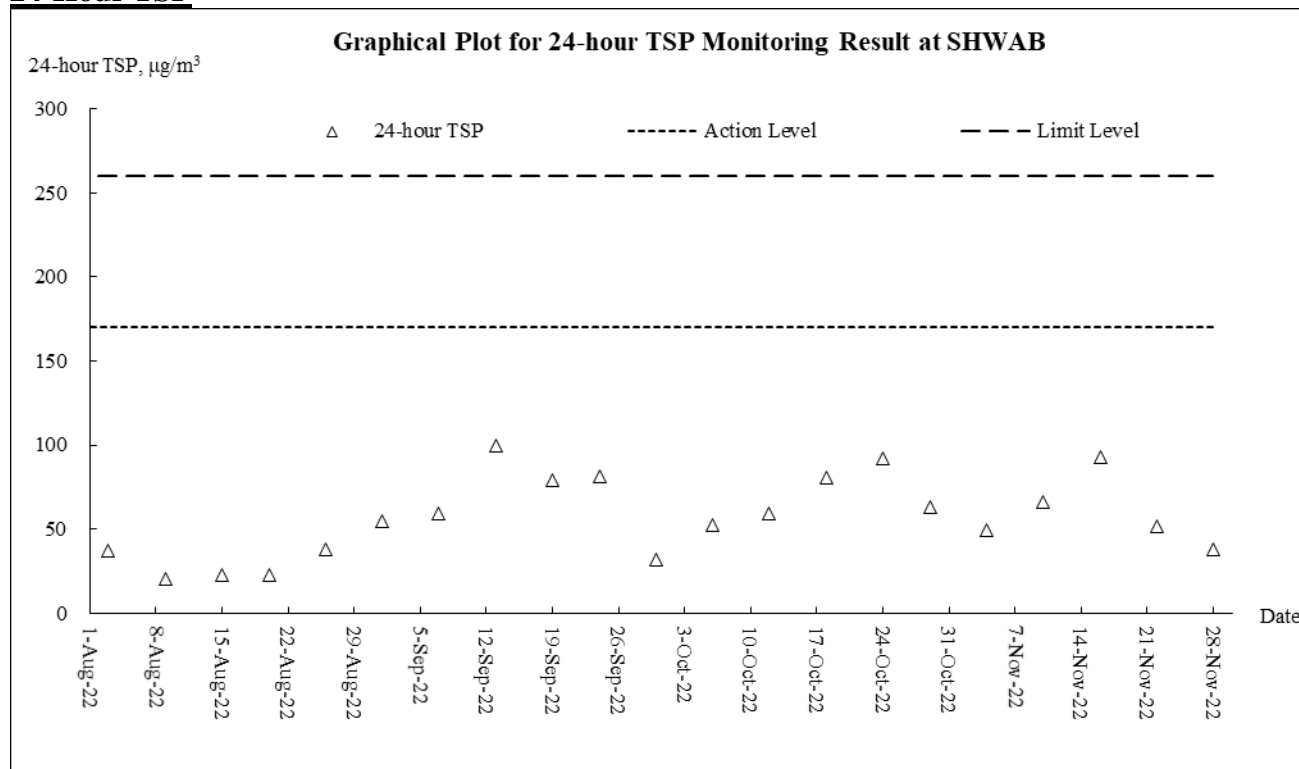


Impact Monitoring Results for 24-hour TSP at SHWAB															
DATE	SAMPL E NUMB ER	ELAPSED TIME		ACTUAL (min)	CHART READING			AVG TEMP (°C)	STANDARD			FILTER WEIGHT (g)		WEIGHT DUST COLLECTED (g)	DUST 24-hour TSP IN AIR (ug/m³)
		INITIAL	FINAL		MIN	MAX	AVG		AVG PRESS (hPa)	FLOW RATE (m³/min)	AIR VOLUME (std m³)	INITIAL	FINAL		
4-Nov-22	28876	18767.10	18791.10	1440.00	32	32	32.0	22.6	1016.3	0.88	1270	2.6112	2.6741	0.0629	50
10-Nov-22	28890	18791.10	18815.10	1440.00	34	34	34.0	24.8	1016.7	0.94	1358	2.5923	2.6823	0.0900	66
16-Nov-22	28901	18815.10	18839.10	1440.00	34	34	34.0	24.1	1015	0.94	1359	2.6694	2.7957	0.1263	93
22-Nov-22	28922	18839.10	18863.11	1440.60	34	34	34.0	23.4	1013.1	0.94	1360	2.6925	2.7625	0.0700	51
28-Nov-22	28918	18863.11	18887.11	1440.00	32	32	32.0	25.6	1012.5	0.87	1259	2.6744	2.7219	0.0475	38

## **Appendix I**

### **Graphical Plots for Monitoring Result**

## 24-Hour TSP



## **Appendix J**

### **Meteorological Data**

Date		Weather	Total Rainfall (mm)	Chek Lap Kok				
				Mean Air Temp. (°C)	Wind Speed (km/h)	Mean Relative Humidity (%)	Wind Direction	Mean Press. (hPa)
1-Nov-22	Tue	Mainly cloudy with a few showers.	4.5	22.4	19.5	61.7	N/NE	1008.2
2-Nov-22	Wed	Cloudy with a few showers.	23.7	20.0	17	82.0	N/NE	1007.0
3-Nov-22	Thu	Moderate to fresh easterly winds.	58.1	22.3	31.5	84.7	E/SE	1012.0
4-Nov-22	Fri	Mainly cloudy with one or two showers.	4	23.9	16.7	83.7	E	1016.3
5-Nov-22	Sat	Moderate to fresh east to northeasterly winds	Trace	21.2	13.5	81.0	NE	1019.0
6-Nov-22	Sun	Mainly cloudy. Moderate northeasterly winds.	6.6	20.4	13.5	82.5	NE	1018.6
7-Nov-22	Mon	One or two rain patches in the morning	1.6	20.9	9	85.0	NE	1017.3
8-Nov-22	Tue	Mainly cloudy with one or two showers.	7.7	21.8	11.2	86.2	NE	1017.3
9-Nov-22	Wed	Moderate to fresh east to northeasterly winds.	0	24.3	9.2	74.0	E/NE	1017.3
10-Nov-22	Thu	Mainly fine. Moderate east to northeasterly winds.	0	25.3	14	72.2	E	1016.7
11-Nov-22	Fri	Mainly fine. Moderate easterly winds.	0	26.5	14.2	69.7	E	1016.2
12-Nov-22	Sat	Mainly fine. Moderate easterly winds.	Trace	25.2	9.5	68.2	E	1015.3
13-Nov-22	Sun	Mainly cloudy. Sunny periods in the afternoon.	0	25.5	10.0	71.2	E/NE	1015.7
14-Nov-22	Mon	Moderate to fresh easterly winds.	0	25.6	20.7	66.2	E	1016.7
15-Nov-22	Tue	Sunny periods. Moderate easterly winds	0	26.2	15.0	68.2	E	1015.5
16-Nov-22	Wed	Sunny periods in the afternoon.	0	25.7	19	68.2	E	1015.0
17-Nov-22	Thu	Mainly cloudy. Sunny periods in the afternoon.	0	25.6	17.5	72.0	E/NE	1014.6
18-Nov-22	Fri	Sunny periods in the afternoon. Moderate easterly winds.	0	26.0	16.2	71.0	E/NE	1015.6
19-Nov-22	Sat	Moderate to fresh easterly winds.	0	26.8	13	65.0	E/NE	1015.0
20-Nov-22	Sun	Sunny periods in the afternoon.	0	26.0	15	67.0	E/NE	1014.0
21-Nov-22	Mon	Moderate to fresh easterly winds	0.5	25.0	18	72.2	E/NE	1013.6
22-Nov-22	Tue	Cloudy with a few showers.	2.5	24.6	22.5	78.7	E	1013.1
23-Nov-22	Wed	Cloudy with a few rain patches.	3.4	24.7	20	85.0	E	1013.8
24-Nov-22	Thu	Moderate east to northeasterly winds	9.6	22.7	23	86.0	E	1015.2
25-Nov-22	Fri	Mainly cloudy with one or two rain patches.	4.8	23.9	17.2	83.0	E/NE	1015.6
26-Nov-22	Sat	Mainly cloudy with one or two rain patches.	0.5	23.2	15	84.0	E/NE	1014.8
27-Nov-22	Sun	Rather warm with sunny periods during the day.	1.9	24.8	23.5	81.0	E/NE	1012.6
28-Nov-22	Mon	Mainly cloudy. A few rain patches at first.	1.4	26.6	13.7	80.7	SE	1012.5
29-Nov-22	Tue	Mainly fine. Hot in the afternoon.	0	27.6	14.5	71.7	E	1013.5
30-Nov-22	Wed	Mainly cloudy with one or two rain patches.	0	21.8	13.7	77.5	NE	1017.3

Remark: The above information was extracted from the Hong Kong Observatory Station of Chek Lap Kok of below link: <https://www.hko.gov.hk/en/index.html>

## **Appendix K**

### **Waste Flow Table**

## Monthly Summary Waste Flow Table for 2022 (year)

Project : Construction of Siu Ho Wan Water Treatment Works Extension and Siu Ho Wan Raw Water Booster Pumping Station

Contract No.: 7/WSD/21

Month	Actual Quantities of Inert C&D Materials Generated Monthly						Actual Quantities of C&D Wastes Generated Monthly				
	Total Quantity Generated	Hard Rock and Large Broken Concrete (a) (see Note 3)	Reused in the Contract (b)	Reused in other Projects (c)	Disposed as Public Fill (d)	Imported Fill	Metals	Paper/ cardboard packaging	Plastics (see Note 2)	Chemical Waste	Others, e.g. general refuse
	(in Tonne)	(in Tonne)	(in Tonne)	(in Tonne)	(in Tonne)	(in Tonne)	(in '000 kg)	(in '000kg)	(in '000kg)	(in '000kg)	(in Tonne)
Jan											
Feb											
Mar	0.000	0.000	0.000	0.000	0.000	0.000	0.000	0.000	0.000	0.000	0.000
Apr	0.000	0.000	0.000	0.000	0.000	0.000	0.000	0.000	0.000	0.000	0.000
May	0.000	0.000	0.000	0.000	0.000	0.000	0.000	0.000	0.000	0.000	1.160
Jun	94.000	0.000	0.000	0.000	94.000	0.000	0.000	0.000	0.000	0.000	207.370
Sub-total	94.000	0.000	0.000	0.000	94.000	0.000	0.000	0.000	0.000	0.000	208.530
Jul	693.250	0.000	0.000	0.000	693.250	0.000	5.890	0.000	0.000	0.000	9.420
Aug	93.410	0.000	0.000	0.000	93.410	0.000	13.990	0.000	0.000	0.000	7.910
Sep	3985.890	0.000	0.000	0.000	3985.890	0.000	0.000	0.000	0.000	0.000	3.480
Oct	27.110	0.000	0.000	0.000	27.110	0.000	0.000	0.000	0.000	0.000	70.990
Nov	6598.800	0.000	0.000	0.000	6598.800	0.000	0.000	0.000	0.000	0.000	37.250
Dec											
Total	11492.460	0.000	0.000	0.000	11492.460	0.000	19.880	0.000	0.000	0.000	337.580

- Notes:
- (1) The waste flow table shall also include C&D materials that are specified in the Contract to be imported for use at the Site.
  - (2) Plastics refer to plastic bottles/containers, plastic sheets/ foam from packaging materials.
  - (3) Broken concrete for recycling into aggregates.
  - (4) Total Quantity Generated = a+b+c+d.

## **Appendix L**

### **Environmental Complaints Log**



**Environmental Complaints Log**

Log ref.	Date of complaint	Complaint route	Reference no.	Complaint nature	Investigation finding	Status
1						
2						
3						
4						

## **Appendix M**

### **Implementation Schedule for Environmental Mitigation Measures**

### Environmental Mitigation Implementation Schedule for Air Quality Control

EIA Ref	Environmental Protection Measures	Location/Timing	Implementation Agent	Implementation Stages*			Relevant Legislation & Guidelines
				D	C	O	
Construction Phase (Air Quality Control)							
S3.8	Dust mitigation measures stipulated in the Air Pollution Control (Construction Dust) Regulation shall be incorporated to control dust emission. Notice shall be given to authority prior to commencing of work. Relevant control measures include: <ul style="list-style-type: none"><li>watering on the work sites at Siu Ho Wan WTW twice a day;</li><li>skip hoist for material transport shall be totally enclosed by impervious sheeting;</li><li>vehicle washing facilities shall be provided at every vehicle exit point;</li><li>the area where vehicle washing takes place and the section of the road between the washing facilities and the exit point shall be paved with concrete, bituminous materials or hardcores;</li><li>every main haul road shall be scaled with concrete and kept clear of dusty materials or sprayed with water so as to maintain the entire road surface wet;</li><li>every stock of more than 20 bags of cement shall be covered entirely by impervious sheeting placed in an area sheltered on the top and the three sides;</li><li>all dusty materials shall be sprayed with water prior to any loading, unloading or transfer operation so as to maintain the dusty materials wet;</li><li>every vehicle shall be washed to remove any dusty materials from its body and wheels before leaving the construction sites;</li><li>the dusty materials stockpiled on site shall be covered; and</li><li>the load of dusty materials carried by vehicle leaving a construction site shall be covered entirely by clean impervious sheeting to ensure dust materials do not leak from the vehicle.</li></ul>	Work site / during construction period.	Contractor		√		Air Pollution Control (Construction Dust) Regulation
Operation Phase(Air Quality)							
NA	NA	NA	NA	NA	NA	NA	NA
Construction Phase (Noise Control)							
S4.8.1	Use of silenced PME	Work site close to all NSRs	Contractor		√		NCO, EIAO-TM
S4.8.6	Good Site Practices: <ul style="list-style-type: none"><li>Only well-maintained plant should be operated on-site and plant should be serviced regularly during the construction program.</li><li>Mobile plant, if any, should be sited as far away from NSRs as possible.</li><li>Machines and plant (such as trucks) that may be in intermittent use should be shut down between work periods or should be throttled down to a minimum.</li><li>Plant known to emit noise strongly in one direction should, wherever possible, be orientated so that the noise is directed away from the nearby NSRs.</li><li>Material stockpiles and other structures should be effectively utilised, wherever practicable, in screening noise from on-site construction activities.</li><li>Silencers or mufflers on construction equipment should be utilised and should be properly maintained during the construction programme.</li></ul>	Work site close to all NSRs / throughout the construction period.	Contractor		√		NCO, EIAO-TM

**WSD Contract No.: 7/WSD/21 - Construction of Siu Ho Wan Water Treatment Works Extension and Siu Ho Wan Raw Water Booster Pumping Station**  
**Monthly Environmental Impact Monitoring and Audit Report (November 2022)**

AUES

EIA Ref	Environmental Protection Measures	Location/Timing	Implementation Agent	Implementation Stages*			Relevant Legislation & Guidelines
				D	C	O	
Operation Phase(Noise Control)							
NA	NA	NA	NA	NA	NA	NA	NA
Construction Phase (Water Quality Control)							
S5.7.2	<i>Construction Site Runoff and Drainage</i> <ul style="list-style-type: none"><li>Before commencing any site formation work, all sewer and drainage connections shall be sealed to prevent debris, soil, sand etc. from entering public sewers/drains.</li><li>Sand/silt removal facilities such as sand traps, silt traps and sediment basins shall be provided to remove sand/silt particles from runoff to meet the requirements of the Technical Memorandum standard under the Water Pollution Control Ordinance. The design of silt removal facilities shall be based on the guidelines provided in ProPECC PN 1/94. All drainage facilities and erosion and sediment control structures shall be inspected monthly and maintained to ensure proper and efficient operation at all times and particularly during rainstorms.</li><li>Water pumped out from foundation excavations shall be discharged into silt removal facilities.</li><li>Exposed soil surfaces shall be protected by paving or fill material as soon as possible to reduce the potential of soil erosion.</li><li>Open stockpiles of construction materials or construction wastes on-site of more than 50m3 shall be covered with tarpaulin or similar fabric during rainstorms.</li></ul>	Work site / During the construction period	Contractor		√		ProPECC PN 1/94; WPCO
S5.7.3	<i>General Construction Activities</i> <ul style="list-style-type: none"><li>Debris and rubbish generated on-site shall be collected, handled and disposed of properly to avoid entering the nearby watercourses and storm water drains. Stockpiles of cement and other construction materials shall be kept covered when not being used.</li></ul>	Work site / During the construction period	Contractor		√		ProPECC PN 1/94; WPCO
S5.7.4	<ul style="list-style-type: none"><li>Oils and fuels shall only be used and stored in designated areas which have pollution prevention facilities. All fuel tanks and storage areas shall be provided with locks and be sited on sealed areas, within bunds of a capacity equal to 110% of the storage capacity of the largest tank. The bund shall be drained of rainwater after a rain event.</li></ul>	Work site / During the construction period	Contractor		√		
S5.7.5	<i>Sewage from Construction Workforce</i> <ul style="list-style-type: none"><li>Temporary sanitary facilities, such as portable chemical toilets, shall be employed on-site. A licensed contractor shall be responsible for appropriate disposal and maintenance of these facilities.</li></ul>	Work site / During the construction period	Contractor		√		WPCO
Operation Phase(Water Quality Control)							
NA	NA	NA	NA	NA	NA	NA	NA
Construction Phase (Ecology)							
S.6.9.3	<i>Mitigation to minimise impacts on vegetation in woodland</i> <ul style="list-style-type: none"><li>All trees shall be preserved as far as possible, especially species of high conservation or amenity value. Recommendations to be provided in the Tree Survey Report to mitigate impacts on trees shall be followed. Where trees are to be preserved in-situ, but are likely to be disturbed from works activities, protective fencing/hoarding shall be carefully set up around the affected trees (refer to</li></ul>	Work site / particularly woodland / During design phase and construction period	WSD/ Contractor	√	√		EIAO

**WSD Contract No.: 7/WSD/21 - Construction of Siu Ho Wan Water Treatment Works Extension and Siu Ho Wan Raw Water Booster Pumping Station**  
**Monthly Environmental Impact Monitoring and Audit Report (November 2022)**

EIA Ref	Environmental Protection Measures	Location/Timing	Implementation Agent	Implementation Stages*			Relevant Legislation & Guidelines
				D	C	O	
S.6.9.4/ S.6.11.2	<ul style="list-style-type: none"> <li>Landscape and Visual). Disturbance of individuals of the shrub/tree species Pavetta hongkongensis and tree Aquilaria sinensis of conservation interest should be avoided. A buffer to the dripline of each plant of at least 1m radius should be demarcated to prohibit disturbance. Where loss of this species would be unavoidable, it is recommended that these plants may be transplanted to safe locations within the same habitat. Following transplantation, regular monitoring of the trees and seedlings should be conducted by a suitably qualified botanist/horticulturist over a 12-month period.</li> </ul>						
S.6.9.5	<i>Mitigation to minimise impacts on aquatic ecology</i> <ul style="list-style-type: none"> <li>Trench excavation works for the raw water mains near the stream courses should be carried out in the dry season as far as practicable.</li> </ul>	Work site / During construction period	WSD/ <i>Contractor</i>	√	√		
S.6.9.6	<i>Mitigation to minimise general disturbance to wildlife</i> <ul style="list-style-type: none"> <li>Noise mitigation measures through the use of quiet construction plant shall be implemented to minimise disturbance to habitats adjacent to the works areas.</li> </ul>	Work site / During construction period	<i>Contractor</i>		√		EIAO
S.6.9.7	<i>General good site practice</i> <ul style="list-style-type: none"> <li>Placement of equipment or stockpile in designated works areas and access routes selected on existing disturbed land to minimise disturbance to natural habitats.</li> <li>Construction activities shall be restricted to works areas that shall be clearly demarcated. The works areas shall be reinstated after completion of the works.</li> <li>Waste skips shall be provided to collect general refuse and construction wastes. The wastes shall be disposed of timely and properly off-site.</li> <li>General drainage arrangements shall include sediment and oil traps to collect and control construction site run-off.</li> <li>Open burning on works sites is illegal, and shall be strictly prohibited. Stove fires on works sites shall also not be allowed. Temporary fire fighting equipment shall be provided particularly in woodland areas.</li> </ul>	Work site / During construction period	<i>Contractor</i>		√		EIAO
S.6.9.8.	<i>Re-vegetation to reinstate works areas</i> <ul style="list-style-type: none"> <li>As far as possible compensatory planting shall use native plants of the same species that occur in the adjacent woodland habitat and have flowers/fruits attractive to wildlife. On-site compensatory planting should be conducted on at least a one to one basis.</li> </ul>	Work site in woodland / Immediately following works	<i>Contractor</i>		√		EIAO
<b>Operation Phase(Ecology)</b>							
NA	NA	NA	NA	NA	NA	NA	NA
<b>Construction Phase (Landscape and Visual Impact)</b>							
S7.9	<ul style="list-style-type: none"> <li>All existing top-soil shall be conserved and reused</li> <li>Temporary hoarding barriers shall be of a recessive visual appearance in both colour and form.</li> <li>Chromatic colour scheme with appropriate texture should be considered while designing the external surface of the proposed SHW Raw Water Booster Pumping Station in order to visually merge the proposed structures into the surrounding landscape.</li> </ul>	During construction phase	<i>Contractor</i>		√		EIAO-TM
<b>Operation Phase(Landscape and Visual Impact)</b>							

**WSD Contract No.: 7/WSD/21 - Construction of Siu Ho Wan Water Treatment Works Extension and Siu Ho Wan Raw Water Booster Pumping Station**  
**Monthly Environmental Impact Monitoring and Audit Report (November 2022)**

AUES

EIA Ref	Environmental Protection Measures	Location/Timing	Implementation Agent	Implementation Stages*			Relevant Legislation & Guidelines
				D	C	O	
S7.9	<ul style="list-style-type: none"> <li>New compensatory planting works shall be carried out as early as possible in the construction period which allow maximum time for establishment and more mature trees when the works completed.</li> <li>Landscape or compensatory planting shall be provided where appropriate for enhancing greening and achieving visual screening. In this aspect, compensatory tree planting shall be considered. Selection of plant species shall match with the surrounding vegetation type and form for consistency of landscape resources and visual comfort, for matching with the local habitat. Tree planting shall be firstly considered when the amenity area or slope is feasible for planting trees so as to provide visual screening.</li> </ul>	During operation phase	Contractor			√	EIAO-TM
S7.9	<ul style="list-style-type: none"> <li>Planting area of approximately 2000 to 3000mm wide where fast growing tall trees with dense foliage shall be provided along the site boundary of Siu Ho Wan Raw Water Booster Pumping Station for visual screening.</li> <li>For planting close to or surrounded by natural terrain, compensatory planting should be arranged in a semi natural manner where feasible in order to blend the new planting into natural environment.</li> <li>The newly planted trees, shrubs and grassed areas are maintained throughout the first 12 months of the operation stage.</li> </ul>	During operation phase	Contractor			√	EIAO-TM
<b>Waste Management</b>							
S10.5.1 - S10.5.3	<p><i>Good Site Practices</i></p> <p>Good site practices during the construction activities include:</p> <ul style="list-style-type: none"> <li>Nomination of approved personnel, such as a site manager, to be responsible for good site practices and making arrangements for collection of all wastes generated at the site and effective disposal to an appropriate facility.</li> <li>Training of site personnel in proper waste management and chemical waste handling procedures.</li> <li>Provision of sufficient waste disposal points and regular collection for disposal.</li> <li>Appropriate measures to minimise windblown litter and dust during transportation of waste by either covering trucks or by transporting wastes in enclosed containers.</li> <li>Regular cleaning and maintenance programme for drainage systems, sumps and oil interceptors.</li> <li>A Waste Management Plan shall be prepared and submitted to the Engineer for approval. One may make reference to ETWB TCW No. 15/2003 for details.</li> <li>A recording system for the amount of wastes generated, recycled and disposed (including the disposal sites) shall be proposed.</li> <li>In order to monitor the disposal of C&amp;D material at public filling areas and to control fly tipping, a trip-ticket system shall be included as one of the contractual requirements to be implemented by an Environmental Team undertaking the Environmental Monitoring and Audit work. One may make reference to WBTC No. 21/2002 for details.</li> </ul>	Work site / During the construction period	Contractor		√		<p>Waste Disposal Ordinance (Cap.54)</p> <p>WBTC No.21/2002, ETWB TCW No. 15/2003</p>
S10.5.4	<p><i>Waste Reduction Measures</i></p> <p>Waste reduction is best achieved at the planning and design stage, as well as by ensuring the implementation of good site practices. Recommendations to achieve waste reduction</p>	Work site / During planning & design stage, and construction	WSD/Contractor	√	√		WBTC No.4/98, ETWB TCW No. 15/2003

**WSD Contract No.: 7/WSD/21 - Construction of Siu Ho Wan Water Treatment Works Extension and Siu Ho Wan Raw Water Booster Pumping Station**  
**Monthly Environmental Impact Monitoring and Audit Report (November 2022)**

EIA Ref	Environmental Protection Measures	Location/Timing	Implementation Agent	Implementation Stages*			Relevant Legislation & Guidelines
				D	C	O	
	include: <ul style="list-style-type: none"> <li>Segregation and storage of different types of waste in different containers, skips or stockpiles to enhance reuse or recycling of materials and their proper disposal.</li> <li>Separate labelled bins shall be provided to segregate aluminium cans from other general refuse generated by the work force, and to encourage collection of by individual collectors.</li> <li>Any unused chemicals or those with remaining functional capacity shall be recycled.</li> <li>Maximising the use of reusable steel formwork to reduce the amount of C&amp;D material.</li> <li>Proper storage and site practices to minimise the potential for damage or contamination of construction materials.</li> <li>Plan and stock construction materials carefully to minimise amount of waste generated and avoid unnecessary generation of waste.</li> </ul>	stage					
S10.5.9	<i>General Refuse</i> General refuse shall be stored in enclosed bins or compaction units separate from C&D material. A reputable waste collector shall be employed by the contractor to remove general refuse from the site, separately from C&D material.	Work site / During the construction period	Contractor		√		Public Health and Municipal Services Ordinance (Cap. 132)
S10.5.7	<i>Construction &amp; Demolition (C&amp;D) Material</i> When disposing C&D material at a public filling area, it shall be noted that the material shall only consist of soil, rock, concrete, brick, cement plaster/mortar, inert building debris, aggregates and asphalt. The material shall be free from marine mud, household refuse, plastic, metals, industrial and chemical waste, animal and vegetable matter, and other material considered to be unsuitable by the Filling Supervisor.	Work site / During the construction period	Contractor		√		WBTC No. 4/98, 21/2002, 25/99, 12/2000  ETWB TCW No. 15/2003
S10.5.8	<i>Chemical Wastes</i> If chemical wastes are produced at the construction site, the Contractor would be required to register with the EPD as a Chemical Waste Producer and to follow the guidelines stated in the Code of Practice on the Packaging, Labelling and Storage of Chemical Wastes. Good quality containers compatible with the chemical wastes shall be used. Appropriate labels shall be securely attached on each chemical waste container indicating the corresponding chemical characteristics of the chemical waste, such as explosives, flammable, oxidizing, irritant, toxic, harmful, corrosive, etc. The Contractor shall use a licensed collector to transport and dispose of the chemical wastes generated at the Chemical Waste Treatment Centre at Tsing Yi, or other licenced facility, in accordance with the Waste Disposal (Chemical Waste) (General) Regulation. All chemical wastes shall be removed from the waterworks installations at the first instance.	Work site / During the construction period	Contractor		√		

Note: N/A Not applicable

\*D – Design; C – Construction; O – Operation